

MUC1 antibody [MSVA-672R] HistoMAX™

Cat. No. GTX04397

Host	Rabbit
Clonality	Monoclonal
Isotype	IgG
Applications	IHC-P
Reactivity	Human

Package

500 µl, 100 µl

PRODUCT

This antibody was validated on 76 different Normal Tissues by IHC-P.

Summary

[Go to Normal Tissue Gallery](#)[Go to Cancer Tissue Gallery](#)

Applications

Application Note

*Optimal dilutions/concentrations should be determined by the researcher.

Suggested dilution	Recommended dilution
--------------------	----------------------

IHC-P	1:75-1:150
-------	------------

Note : Manual staining : Heat-induced antigen retrieval for 5 minutes in an autoclave at 121°C in pH 7.8 Tris-EDTA-based Target Retrieval Solution buffer. Based on the testing result, the pH 9.0 showed a strongest staining pattern. The pH 7.8 and pH 6.0 is acceptable without resulting in a significant reduction of sensitivity.

Not tested in other applications.

Product Note	Highly recommended for IHC-P in human tissues.
--------------	--

Properties

Form	Liquid
Buffer	PBS, 0.05% BSA (Please contact us for PBS only format)
Preservative	0.05% sodium azide
Storage	Store as concentrated solution. Centrifuge briefly prior to opening vial. For short-term storage (1-2 weeks), store at 4°C. For long-term storage, aliquot and store at -20°C or below. Avoid multiple freeze-thaw cycles.
Concentration	0.2 mg/ml (Please refer to the vial label for the specific concentration.)
Immunogen	Recombinant human MUC1 protein
Purification	Protein A/G purified
Conjugation	Unconjugated



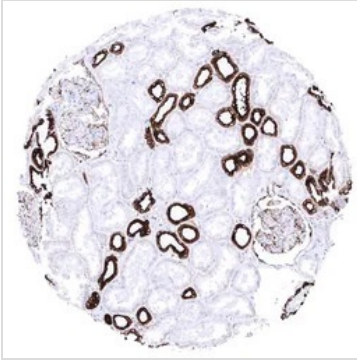
For full product information, images and publications, please visit our [website](#).

Date 2026 / 02 / 02 Page 1 of 2

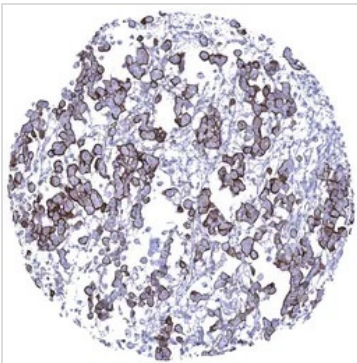
For laboratory research use only. Not for any clinical, therapeutic, or diagnostic use in humans or animals. Not for animal or human consumption.

Note

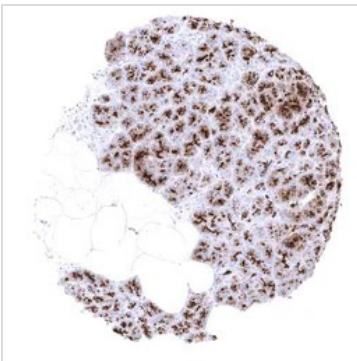
Purchasers shall not, and agree not to enable third parties to, analyze, copy, reverse engineer or otherwise attempt to determine the structure or sequence of the product.

DATA IMAGES

GTx04397 IHC-P Image

IHC-P analysis of human renal cortex tissue using GTx04397 MUC1 antibody [MSVA-672R] HistoMAX™. In the kidney, distal tubuli and collecting ducts show a strong cytoplasmic MUC1 staining while proximal tubuli are negative and cells of the Bowman's capsule show weak to moderate positivity.


GTx04397 IHC-P Image

IHC-P analysis of human epithelioid malignant mesothelioma tissue using GTx04397 MUC1 antibody [MSVA-672R] HistoMAX™. Malignant mesothelioma epithelioid variant with strong predominantly membranous MUC1 immunostaining of tumor cells.


GTx04397 IHC-P Image

IHC-P analysis of human pancreas tissue using GTx04397 MUC1 antibody [MSVA-672R] HistoMAX™. Pancreatic acinar cells show a strong MUC1 immunostaining of the apical membranes and of granular Golgi like structures below the apical surface.



For full product information, images and publications, please visit our [website](#).