

Villin antibody [MSVA-459R] HistoMAX™

Cat. No. GTX04400

Host	Rabbit
Clonality	Monoclonal
Isotype	IgG
Applications	IHC-P
Reactivity	Human

References (1)

Package

500 µl, 100 µl

PRODUCT

This antibody was validated on 76 different Normal Tissues by IHC-P.

Summary

[Go to Normal Tissue Gallery](#)[Go to Cancer Tissue Gallery](#)

Applications

Application Note

*Optimal dilutions/concentrations should be determined by the researcher.

Suggested dilution Recommended dilution

IHC-P 1:100-1:200

Note : Manual staining : Heat-induced antigen retrieval for 5 minutes in an autoclave at 121°C in pH 7.8 Tris-EDTA-based Target Retrieval Solution buffer. Based on the testing result, the pH 9.0 showed a strongest staining pattern. The pH 7.8 is acceptable but lower pH results in a significant reduction of sensitivity.

Not tested in other applications.

Product Note **Highly recommended for IHC-P in human tissues.**

Properties

Form	Liquid
Buffer	PBS, 0.05% BSA (Please contact us for PBS only format)
Preservative	0.05% sodium azide
Storage	Store as concentrated solution. Centrifuge briefly prior to opening vial. For short-term storage (1-2 weeks), store at 4°C. For long-term storage, aliquot and store at -20°C or below. Avoid multiple freeze-thaw cycles.
Concentration	0.2 mg/ml (Please refer to the vial label for the specific concentration.)
Immunogen	Recombinant fragment (around aa600-700) of human Villin protein
Purification	Protein A/G purified
Conjugation	Unconjugated



For full product information, images and publications, please visit our [website](#).

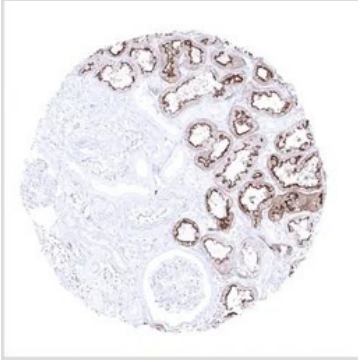
Date 2025 / 12 / 13 Page 1 of 2

For laboratory research use only. Not for any clinical, therapeutic, or diagnostic use in humans or animals. Not for animal or human consumption.

Note

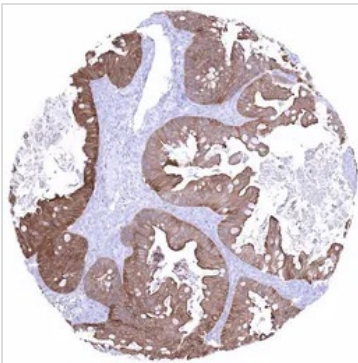
Purchasers shall not, and agree not to enable third parties to, analyze, copy, reverse engineer or otherwise attempt to determine the structure or sequence of the product.

DATA IMAGES



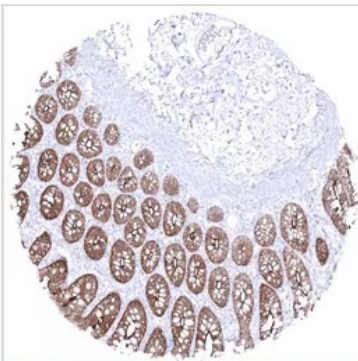
GTX04400 IHC-P Image

IHC-P analysis of human renal cortex tissue using GTX04400 Villin antibody [MSVA-459R] HistoMAX™. A strong villin positivity is seen in proximal tubuli of the kidney but not in distal tubuli or glomeruli.



GTX04400 IHC-P Image

IHC-P analysis of human mucinous ovarian cancer (MOC) tissue using GTX04400 Villin antibody [MSVA-459R] HistoMAX™. Mucinous ovarian cancer showing strong villin immunostaining.



GTX04400 IHC-P Image

IHC-P analysis of human mucosa from descending colon tissue using GTX04400 Villin antibody [MSVA-459R] HistoMAX™. Colon epithelial cells show a strong predominantly membranous but also cytoplasmic villin immunostaining.



For full product information, images and publications, please visit our [website](https://www.genetex.com).