

## Cytokeratin 10 antibody [MSVA-610M] HistoMAX™

Cat. No. GTX04401

Host	Mouse
Clonality	Monoclonal
Isotype	IgG1
Applications	IHC-P
Reactivity	Human

References ( 1 )

Package

500 µl, 100 µl

## PRODUCT

This antibody was validated on 76 different Normal Tissues by IHC-P.

## Summary

[Go to Normal Tissue Gallery](#)[Go to Cancer Tissue Gallery](#)

## Applications

## Application Note

\*Optimal dilutions/concentrations should be determined by the researcher.

Suggested dilution	Recommended dilution
IHC-P	1:100-1:200

**Note : Manual staining : Heat-induced antigen retrieval for 5 minutes in an autoclave at 121°C in pH 7.8 Tris-EDTA-based Target Retrieval Solution buffer. Based on the testing result, the pH 9.0 showed a strongest staining pattern. The pH 7.8 is acceptable but lower pH results in a significant reduction of sensitivity.**

Not tested in other applications.

**Product Note**      **Highly recommended for IHC-P in human tissues.**

## Properties

Form	Liquid
Buffer	PBS, 0.05% BSA (Please contact us for PBS only format)
Preservative	0.05% sodium azide
Storage	Store as concentrated solution. Centrifuge briefly prior to opening vial. For short-term storage (1-2 weeks), store at 4°C. For long-term storage, aliquot and store at -20°C or below. Avoid multiple freeze-thaw cycles.
Concentration	0.2 mg/ml (Please refer to the vial label for the specific concentration.)
Immunogen	Recombinant full-length human KRT10 protein.
Purification	Protein A/G purified
Conjugation	Unconjugated



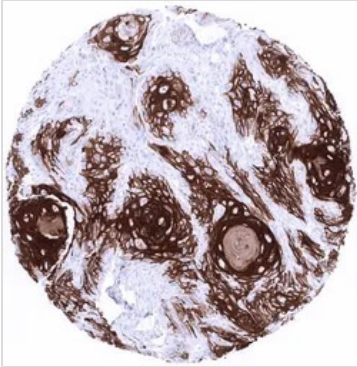
For full product information, images and publications, please visit our [website](#).

Date 2025 / 08 / 29 Page 1 of 2

For laboratory research use only. Not for any clinical, therapeutic, or diagnostic use in humans or animals. Not for animal or human consumption.

**Note**

Purchasers shall not, and agree not to enable third parties to, analyze, copy, reverse engineer or otherwise attempt to determine the structure or sequence of the product.

**DATA IMAGES**

**GTx04401 IHC-P Image**

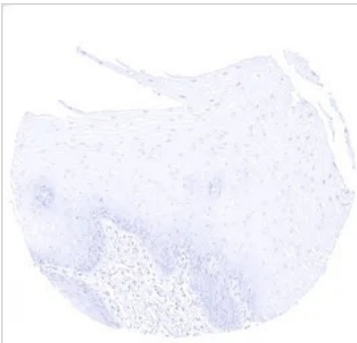
IHC-P analysis of human squamous cell carcinoma (SCC) from vulva tissue using GTx04401 Cytokeratin 10 antibody [MSVA-610M] HistoMAX™.

Strong Cytokeratin 10 immunostaining in a squamous cell carcinoma of the vulva. The basal cell layers are largely unstained.


**GTx04401 IHC-P Image**

IHC-P analysis of human skin tissue using GTx04401 Cytokeratin 10 antibody [MSVA-610M] HistoMAX™.

Cytokeratin 10 is strongly positive in all suprabasal cell layers of the epidermis and in associated sebaceous glands and hair follicles. The basal cell layer remains strictly Cytokeratin 10 negative.


**GTx04401 IHC-P Image**

IHC-P analysis of human esophagus tissue using GTx04401 Cytokeratin 10 antibody [MSVA-610M] HistoMAX™.

Absence of cytokeratin 10 staining in non keratinizing squamous epithelium of the esophagus.



For full product information, images and publications, please visit our [website](https://www.genetex.com).