

Placental Alkaline Phosphatase antibody [MSVA-350R] HistoMAX™

Cat. No. GTX04413

Host	Rabbit
Clonality	Monoclonal
Isotype	IgG
Applications	IHC-P
Reactivity	Human

[References \(1 \)](#)

[Package](#)

500 µl, 100 µl

PRODUCT

This antibody was validated on 76 different Normal Tissues by IHC-P.

Summary

[Go to Normal Tissue Gallery](#)

[Go to Cancer Tissue Gallery](#)

Applications

Application Note

*Optimal dilutions/concentrations should be determined by the researcher.

Suggested dilution Recommended dilution

IHC-P 1:100-1:200

Note : Manual staining : Heat-induced antigen retrieval for 5 minutes in an autoclave at 121°C in pH 7.8 Tris-EDTA-based Target Retrieval Solution buffer. Based on testing result, pH 9.0 showed a strongest staining pattern. However, pH 7.8 results in only a slight reduction of the staining intensity as compared to pH 9.0. Therefore, the pH 7.8 was an optimal for manual staining because of the better tissue preservation at pH 7.8 than at pH 9.0.

This antibody has been validated by Autostainer including Agilent/Dako - Autostainer Link 48, Bond RX-Lecia, and Roche-Ventana Discovery ULTRA. The detailed steps by Autostainer please refer to the [protocol](#).

Not tested in other applications.

Product Note

Highly recommended for IHC-P in human tissues. Autostainer protocol information available

Properties

Form	Liquid
Buffer	PBS, 0.05% BSA (Please contact us for PBS only format)
Preservative	0.05% sodium azide
Storage	Store as concentrated solution. Centrifuge briefly prior to opening vial. For short-term storage (1-2 weeks), store at 4°C. For long-term storage, aliquot and store at -20°C or below. Avoid multiple freeze-thaw cycles.
Concentration	0.2 mg/ml (Please refer to the vial label for the specific concentration.)
Immunogen	Recombinant full-length human ALPP protein

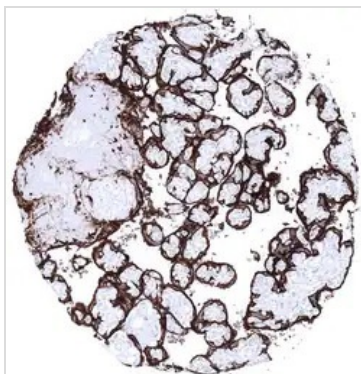


For full product information, images and publications, please visit our [website](#).

Date 2026 / 01 / 02 Page 1 of 2

Purification	Protein A/G purified
Conjugation	Unconjugated
Note	For laboratory research use only. Not for any clinical, therapeutic, or diagnostic use in humans or animals. Not for animal or human consumption. Purchasers shall not, and agree not to enable third parties to, analyze, copy, reverse engineer or otherwise attempt to determine the structure or sequence of the product.

DATA IMAGES

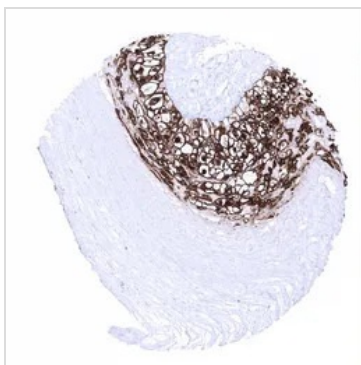


GTx04413 IHC-P Image

IHC-P analysis of human placenta (mature) tissue using GTx04413 Placental Alkaline Phosphatase antibody [MSVA-350R] HistoMAX™.

Placental Alkaline Phosphatase immunostaining increases continuously throughout the pregnancy.

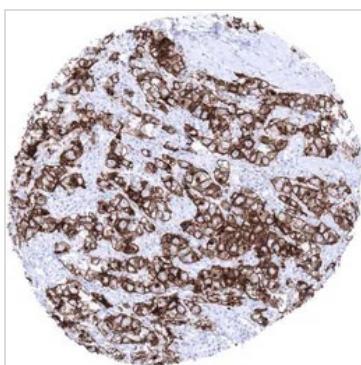
Placental Alkaline Phosphatase immunostaining is strong in the cyto- and syncytiotrophoblast of the mature placenta.



GTx04413 IHC-P Image

IHC-P analysis of human mature placenta (amnion and chorion) tissue using GTx04413 Placental Alkaline Phosphatase antibody [MSVA-350R] HistoMAX™.

Membranous Placental Alkaline Phosphatase immunostaining is strong in chorion cells.



GTx04413 IHC-P Image

IHC-P analysis of human testicular seminoma tissue using GTx04413 Placental Alkaline Phosphatase antibody [MSVA-350R] HistoMAX™.

Strong Placental Alkaline Phosphatase Immunostaining in all cells of a testicular seminoma.



For full product information, images and publications, please visit our [website](https://www.genetex.com).