

# MSH6 antibody [MSVA-906R] HistoMAX™

**Cat. No. GTX04416**

<b>Host</b>	Rabbit
<b>Clonality</b>	Monoclonal
<b>Isotype</b>	IgG
<b>Applications</b>	IHC-P
<b>Reactivity</b>	Human

## Package

500 µl, 100 µl

## PRODUCT

This antibody was validated on 76 different Normal Tissues by IHC-P.

## Summary

[Go to Normal Tissue Gallery](#)

[Go to Cancer Tissue Gallery](#)

## Applications

### Application Note

\*Optimal dilutions/concentrations should be determined by the researcher.

### Suggested dilution Recommended dilution

IHC-P 1:75-1:150

**Note : Manual staining : Heat-induced antigen retrieval for 5 minutes in an autoclave at 121°C in pH 7.8 Tris-EDTA-based Target Retrieval Solution buffer.**

**This antibody has been validated by Autostainer including Agilent/Dako - Autostainer Link 48 and BOND RX - Leica. The detailed steps by Autostainer please refer to the [protocol](#).**

Not tested in other applications.

**Product Note** **Highly recommended for IHC-P in human tissues.**

## Properties

<b>Form</b>	Liquid
<b>Buffer</b>	PBS, 0.05% BSA (Please contact us for PBS only format)
<b>Preservative</b>	0.05% sodium azide
<b>Storage</b>	Store as concentrated solution. Centrifuge briefly prior to opening vial. For short-term storage (1-2 weeks), store at 4°C. For long-term storage, aliquot and store at -20°C or below. Avoid multiple freeze-thaw cycles.
<b>Concentration</b>	0.2 mg/ml (Please refer to the vial label for the specific concentration.)
<b>Immunogen</b>	Recombinant fragment (around aa 1-100) of human MSH6 protein
<b>Purification</b>	Protein A/G purified



For full product information, images and publications, please visit our [website](#).

Date 2026 / 02 / 02 Page 1 of 2

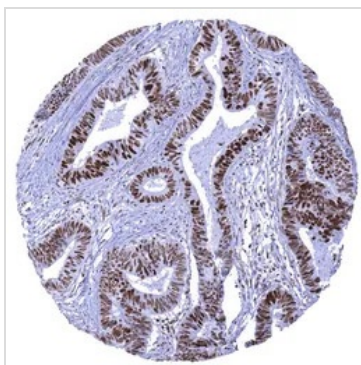
**Conjugation**

Unconjugated

**Note**

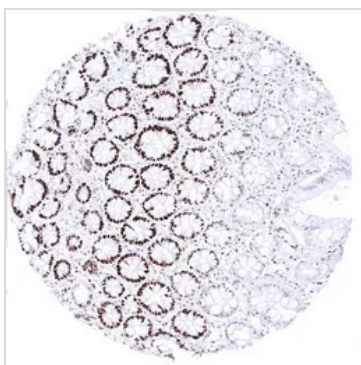
For laboratory research use only. Not for any clinical, therapeutic, or diagnostic use in humans or animals. Not for animal or human consumption.

Purchasers shall not, and agree not to enable third parties to, analyze, copy, reverse engineer or otherwise attempt to determine the structure or sequence of the product.

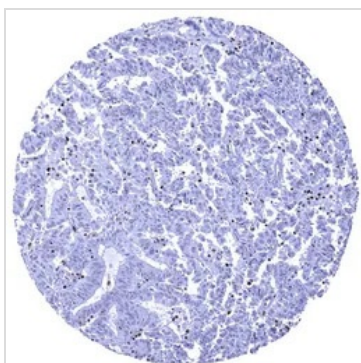
**DATA IMAGES**

**GTx04416 IHC-P Image**

IHC-P analysis of human colorectal adenocarcinoma (COAD) tissue using GTx04416 MSH6 antibody [MSVA-906R] HistoMAX™.

Colorectal adenocarcinoma showing strong MSH6 positivity in cancer cells and moderate staining in stromal cells.


**GTx04416 IHC-P Image**

IHC-P analysis of human mucosa from descending colon tissue using GTx04416 MSH6 antibody [MSVA-906R] HistoMAX™.


**GTx04416 IHC-P Image**

IHC-P analysis of human colorectal adenocarcinoma (COAD) tissue using GTx04416 MSH6 antibody [MSVA-906R] HistoMAX™.

Colorectal adenocarcinoma with strong MSH6 immunostaining in stromal and inflammatory cells but absent MSH6 staining in cancer cells.



For full product information, images and publications, please visit our [website](https://www.genetex.com).