

# GATA3 antibody [MSVA-450M] HistoMAX™

**Cat. No. GTX04420**

<b>Host</b>	Mouse
<b>Clonality</b>	Monoclonal
<b>Isotype</b>	IgG2b
<b>Applications</b>	IHC-P
<b>Reactivity</b>	Human

References ( 1 )

Package

500 µl, 100 µl

## PRODUCT

This antibody was validated on 76 different Normal Tissues by IHC-P.

### Summary

[Go to Normal Tissue Gallery](#)

[Go to Cancer Tissue Gallery](#)

## Applications

### Application Note

\*Optimal dilutions/concentrations should be determined by the researcher.

### Suggested dilution Recommended dilution

IHC-P 1:50-1:100

**Note : Manual staining : Heat-induced antigen retrieval for 5 minutes in an autoclave at 121°C in pH 7.8 Tris-EDTA-based Target Retrieval Solution buffer.**

**This antibody has been validated by Autostainer including Agilent/Dako - Autostainer Link 48 and BOND RX - Leica. The detailed steps by Autostainer please refer to the [protocol](#).**

Not tested in other applications.

**Product Note** **Highly recommended for IHC-P in human tissues.**

## Properties

<b>Form</b>	Liquid
<b>Buffer</b>	PBS, 0.05% BSA (Please contact us for PBS only format)
<b>Preservative</b>	0.05% sodium azide
<b>Storage</b>	Store as concentrated solution. Centrifuge briefly prior to opening vial. For short-term storage (1-2 weeks), store at 4°C. For long-term storage, aliquot and store at -20°C or below. Avoid multiple freeze-thaw cycles.
<b>Concentration</b>	0.2 mg/ml (Please refer to the vial label for the specific concentration.)
<b>Immunogen</b>	Recombinant full-length human GATA-3 protein
<b>Purification</b>	Protein A/G purified



For full product information, images and publications, please visit our [website](#).

Date 2025 / 12 / 06 Page 1 of 2

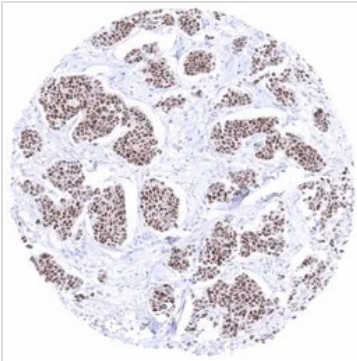
**Conjugation**

Unconjugated

**Note**

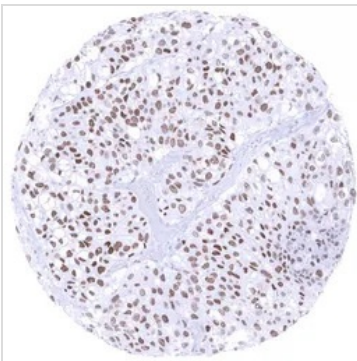
For laboratory research use only. Not for any clinical, therapeutic, or diagnostic use in humans or animals. Not for animal or human consumption.

Purchasers shall not, and agree not to enable third parties to, analyze, copy, reverse engineer or otherwise attempt to determine the structure or sequence of the product.

**DATA IMAGES**

**GTx04420 IHC-P Image**

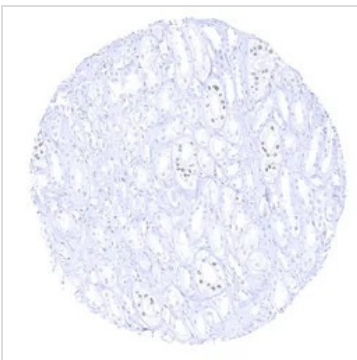
IHC-P analysis of human invasive breast cancer of no special type (NST) tissue using GTx04420 GATA3 antibody [MSVA-450M] HistoMAX™.

Breast cancer of no special type NST showing moderate to strong GATA3 immunostaining.


**GTx04420 IHC-P Image**

IHC-P analysis of human muscle-invasive bladder cancer (MIBC) tissue using GTx04420 GATA3 antibody [MSVA-450M] HistoMAX™.

Muscle invasive urothelial carcinoma with moderate to strong GATA3 immunostaining of tumor cells.


**GTx04420 IHC-P Image**

IHC-P analysis of human renal medulla tissue using GTx04420 GATA3 antibody [MSVA-450M] HistoMAX™.

In the kidney a moderate to strong GATA3 positivity is seen in collecting ducts.



For full product information, images and publications, please visit our [website](#).