

INSM1 antibody [MSVA-456R] HistoMAX™

Cat. No. GTX04423

Host	Rabbit
Clonality	Monoclonal
Isotype	IgG
Applications	IHC-P
Reactivity	Human

References (1)

Package

500 µl, 100 µl

PRODUCT

This antibody was validated on 76 different Normal Tissues by IHC-P.

Summary

[Go to Normal Tissue Gallery](#)
[Go to Cancer Tissue Gallery](#)

Applications

Application Note

*Optimal dilutions/concentrations should be determined by the researcher.

Suggested dilution

Recommended dilution

IHC-P

1:75-1:150

Note : Manual staining : Heat-induced antigen retrieval for 5 minutes in an autoclave at 121°C in pH 7.8 Tris-EDTA-based Target Retrieval Solution buffer.

Not tested in other applications.

Product Note

Highly recommended for IHC-P in human tissues.

Properties

Form	Liquid
Buffer	PBS, 0.05% BSA (Please contact us for PBS only format)
Preservative	0.05% sodium azide
Storage	Store as concentrated solution. Centrifuge briefly prior to opening vial. For short-term storage (1-2 weeks), store at 4°C. For long-term storage, aliquot and store at -20°C or below. Avoid multiple freeze-thaw cycles.
Concentration	0.2 mg/ml (Please refer to the vial label for the specific concentration.)
Immunogen	Recombinant fragment (around aa81-125) corresponding to the N-terminus of human INSM1
Purification	Protein A/G purified
Conjugation	Unconjugated



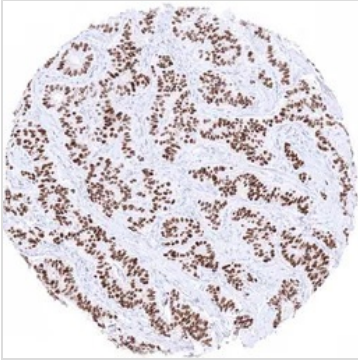
For full product information, images and publications, please visit our [website](#).

For laboratory research use only. Not for any clinical, therapeutic, or diagnostic use in humans or animals. Not for animal or human consumption.

Note

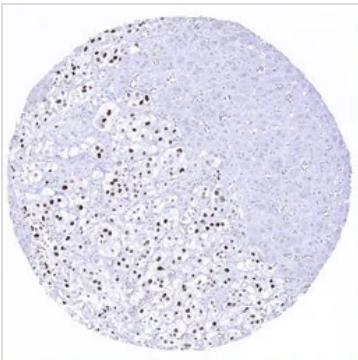
Purchasers shall not, and agree not to enable third parties to, analyze, copy, reverse engineer or otherwise attempt to determine the structure or sequence of the product.

DATA IMAGES

**GTX04423 IHC-P Image**

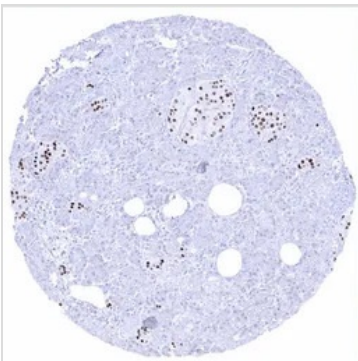
IHC-P analysis of human appendiceal neuroendocrine tumor tissue using GTX04423 INSM1 antibody [MSVA-456R] HistoMAX™.

Strong INSM1 immunostaining in a low grade neuroendocrine tumor of the appendix.

**GTX04423 IHC-P Image**

IHC-P analysis of human adrenal gland tissue using GTX04423 INSM1 antibody [MSVA-456R] HistoMAX™.

Strong INSM1 immunostaining of medullar but not cortical cells of the adrenal gland.

**GTX04423 IHC-P Image**

IHC-P analysis of human pancreas tissue using GTX04423 INSM1 antibody [MSVA-456R] HistoMAX™.

Moderate to strong INSM1 immunostaining in most cells of Langerhans islets of the pancreas.



For full product information, images and publications, please visit our [website](#).