

ACE2 antibody [MSVA-919R] HistoMAX™

Cat. No. GTX04425

Host	Rabbit
Clonality	Monoclonal
Isotype	IgG
Applications	IHC-P
Reactivity	Human

Package

500 µl, 100 µl

PRODUCT

This antibody was validated on 76 different Normal Tissues by IHC-P.

Summary

[Go to Normal Tissue Gallery](#)
[Go to Cancer Tissue Gallery](#)

Applications

Application Note

*Optimal dilutions/concentrations should be determined by the researcher.

Suggested dilution	Recommended dilution
IHC-P	1:100-1:200

Note : Manual staining : Heat-induced antigen retrieval for 5 minutes in an autoclave at 121°C in pH 7.8 Tris-EDTA-based Target Retrieval Solution buffer.

Not tested in other applications.

Product Note **Highly recommended for IHC-P in human tissues.**

Properties

Form	Liquid
Buffer	PBS, 0.05% BSA (Please contact us for PBS only format)
Preservative	0.05% sodium azide
Storage	Store as concentrated solution. Centrifuge briefly prior to opening vial. For short-term storage (1-2 weeks), store at 4°C. For long-term storage, aliquot and store at -20°C or below. Avoid multiple freeze-thaw cycles.
Concentration	0.2 mg/ml (Please refer to the vial label for the specific concentration.)
Immunogen	Recombinant fragment (around aa705-805) of human ACE2
Purification	Protein A/G purified
Conjugation	Unconjugated



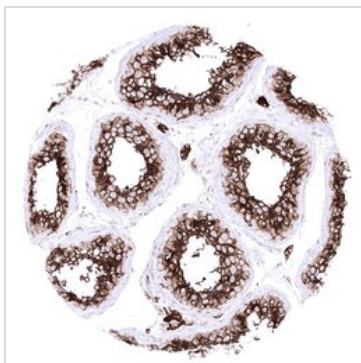
For full product information, images and publications, please visit our [website](#).

For laboratory research use only. Not for any clinical, therapeutic, or diagnostic use in humans or animals. Not for animal or human consumption.

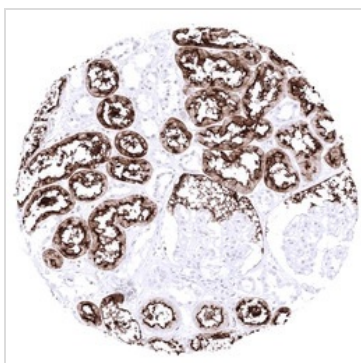
Note

Purchasers shall not, and agree not to enable third parties to, analyze, copy, reverse engineer or otherwise attempt to determine the structure or sequence of the product.

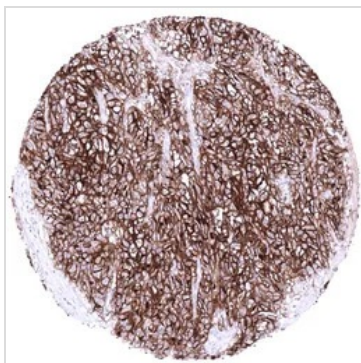
DATA IMAGES

**GTX04425 IHC-P Image**

IHC-P analysis of human testis tissue using GTX04425 ACE2 antibody [MSVA-919R] HistoMAX™. Leydig cells and spermatocytes of the testis show a particularly strong ACE2 immunostaining in the testis.

**GTX04425 IHC-P Image**

IHC-P analysis of human renal cortex tissue using GTX04425 ACE2 antibody [MSVA-919R] HistoMAX™. A strong ACE2 immunostaining occurs in proximal tubuli of the kidney.

**GTX04425 IHC-P Image**

IHC-P analysis of human clear cell renal cell carcinoma (ccRCC) tissue using GTX04425 ACE2 antibody [MSVA-919R] HistoMAX™. Clear cell renal cell carcinoma strong strong membranous ACE2 positivity.



For full product information, images and publications, please visit our [website](#).