

## HLA-DRA antibody [MSVA-470R] HistoMAX™

Cat. No. GTX04429

Host	Rabbit
Clonality	Monoclonal
Isotype	IgG
Applications	IHC-P
Reactivity	Human

## Package

500 µl, 100 µl

## PRODUCT

This antibody was validated on 76 different Normal Tissues by IHC-P.

## Summary

[Go to Normal Tissue Gallery](#)
[Go to Cancer Tissue Gallery](#)

## Applications

## Application Note

\*Optimal dilutions/concentrations should be determined by the researcher.

Suggested dilution	Recommended dilution
IHC-P	1:100-1:200

**Note : Manual staining : Heat-induced antigen retrieval for 5 minutes in an autoclave at 121°C in pH 7.8 Tris-EDTA-based Target Retrieval Solution buffer.**

**This antibody has been validated by Autostainer including Agilent/Dako - Autostainer Link 48, Bond RX-Lecia, and Roche-Ventana Discovery ULTRA. The detailed steps by Autostainer please refer to the [protocol](#).**

Not tested in other applications.

## Product Note

**Highly recommended for IHC-P in human tissues.** Autostainer protocol information available

## Properties

Form	Liquid
Buffer	PBS, 0.05% BSA (Please contact us for PBS only format)
Preservative	0.05% sodium azide
Storage	Store as concentrated solution. Centrifuge briefly prior to opening vial. For short-term storage (1-2 weeks), store at 4°C. For long-term storage, aliquot and store at -20°C or below. Avoid multiple freeze-thaw cycles.
Concentration	0.2 mg/ml (Please refer to the vial label for the specific concentration.)
Immunogen	Recombinant fragment of human HLA-DR protein
Purification	Protein A/G purified

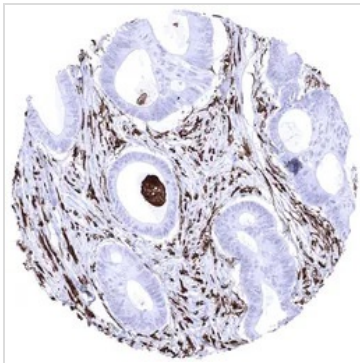


For full product information, images and publications, please visit our [website](#).

**Conjugation** Unconjugated

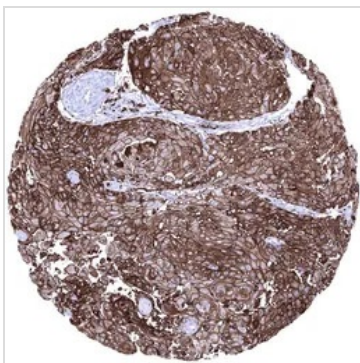
**Note** For laboratory research use only. Not for any clinical, therapeutic, or diagnostic use in humans or animals. Not for animal or human consumption.  
Purchasers shall not, and agree not to enable third parties to, analyze, copy, reverse engineer or otherwise attempt to determine the structure or sequence of the product.

DATA IMAGES



**GTX04429 IHC-P Image**

IHC-P analysis of human colorectal adenocarcinoma (COAD, HLA-AR negative) tissue using GTX04429 HLA-DRA antibody [MSVA-470R] HistoMAX™.  
HLA-DRA negative colorectal adenocarcinoma showing strong HLA-DRA positivity of capillaries and tumor associated inflammatory cells.



**GTX04429 IHC-P Image**

IHC-P analysis of human squamous cell carcinoma (SCC) from vulva tissue using GTX04429 HLA-DRA antibody [MSVA-470R] HistoMAX™.  
Vulva Squamous cell carcinoma showing strong HLA-DRA immunostaining in tumor cells.



**GTX04429 IHC-P Image**

IHC-P analysis of human liver tissue using GTX04429 HLA-DRA antibody [MSVA-470R] HistoMAX™.  
Sinusoids and Kupffer cells show strong HLA-DRA immunostaining in the liver.



For full product information, images and publications, please visit our [website](#).