

## PAX8 antibody [MSVA-708R] HistoMAX™

Cat. No. GTX04430

Host	Rabbit
Clonality	Monoclonal
Isotype	IgG
Applications	IHC-P
Reactivity	Human

References ( 1 )

Package

500 µl, 100 µl

## PRODUCT

This antibody was validated on 76 different Normal Tissues by IHC-P.

## Summary

[Go to Normal Tissue Gallery](#)[Go to Cancer Tissue Gallery](#)

## Applications

## Application Note

\*Optimal dilutions/concentrations should be determined by the researcher.

Suggested dilution	Recommended dilution
--------------------	----------------------

IHC-P	1:100-1:200
-------	-------------

**Note : Manual staining : Heat-induced antigen retrieval for 5 minutes in an autoclave at 121°C in pH 7.8 Tris-EDTA-based Target Retrieval Solution buffer.**

Not tested in other applications.

## Product Note

**Highly recommended for IHC-P in human tissues.**

## Properties

Form	Liquid
Buffer	PBS, 0.05% BSA (Please contact us for PBS only format)
Preservative	0.05% sodium azide
Storage	Store as concentrated solution. Centrifuge briefly prior to opening vial. For short-term storage (1-2 weeks), store at 4°C. For long-term storage, aliquot and store at -20°C or below. Avoid multiple freeze-thaw cycles.
Concentration	0.2 mg/ml (Please refer to the vial label for the specific concentration.)
Immunogen	Recombinant fragment of human PAX8 protein
Purification	Protein A/G purified
Conjugation	Unconjugated



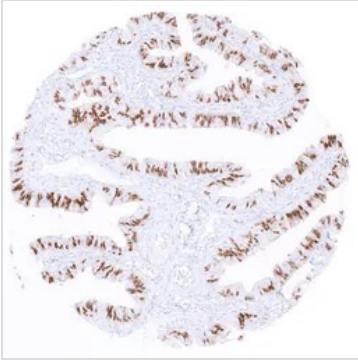
For full product information, images and publications, please visit our [website](#).

Date 2025 / 12 / 06 Page 1 of 2

For laboratory research use only. Not for any clinical, therapeutic, or diagnostic use in humans or animals. Not for animal or human consumption.

**Note**

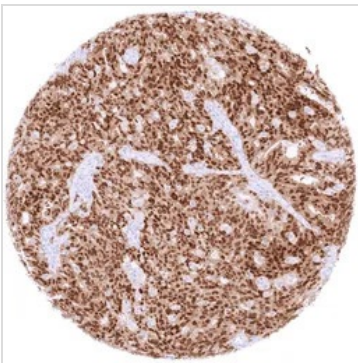
Purchasers shall not, and agree not to enable third parties to, analyze, copy, reverse engineer or otherwise attempt to determine the structure or sequence of the product.

**DATA IMAGES**

**GTx04430 IHC-P Image**

IHC-P analysis of human fallopian tube tissue using GTx04430 PAX8 antibody [MSVA-708R] HistoMAX™. Strong nuclear PAX8 staining of a subset of epithelial cells in the fallopian tube.


**GTx04430 IHC-P Image**

IHC-P analysis of human lymph node tissue using GTx04430 PAX8 antibody [MSVA-708R] HistoMAX™. PAX8 staining is completely absent in lymphocytes lymph node.


**GTx04430 IHC-P Image**

IHC-P analysis of human high-grade serous ovarian cancer (HGSOC) tissue using GTx04430 PAX8 antibody [MSVA-708R] HistoMAX™. Serous high grade ovarian carcinoma with strong PAX8 staining of tumor cells.



For full product information, images and publications, please visit our [website](#).