

## GP2 antibody [MSVA-475M] HistoMAX™

Cat. No. GTX04436

Host	Mouse
Clonality	Monoclonal
Isotype	IgG2c
Applications	IHC-P
Reactivity	Human

References ( 1 )

Package

500 µl, 100 µl

## PRODUCT

This antibody was validated on 76 different Normal Tissues by IHC-P.

## Summary

[Go to Normal Tissue Gallery](#)[Go to Cancer Tissue Gallery](#)

## Applications

## Application Note

\*Optimal dilutions/concentrations should be determined by the researcher.

Suggested dilution	Recommended dilution
--------------------	----------------------

IHC-P	1:100-1:200
-------	-------------

**Note : Manual staining : Heat-induced antigen retrieval for 5 minutes in an autoclave at 121°C in pH 7.8 Tris-EDTA-based Target Retrieval Solution buffer.**

**This antibody has been validated by Autostainer including Agilent/Dako - Autostainer Link 48, Bond RX-Lecia, and Roche-Ventana Discovery ULTRA. The detailed steps by Autostainer please refer to the [protocol](#).**

Not tested in other applications.

Product Note	Highly recommended for IHC-P in human tissues.
--------------	--

## Properties

Form	Liquid
Buffer	PBS, 0.05% BSA (Please contact us for PBS only format)
Preservative	0.05% sodium azide
Storage	Store as concentrated solution. Centrifuge briefly prior to opening vial. For short-term storage (1-2 weeks), store at 4°C. For long-term storage, aliquot and store at -20°C or below. Avoid multiple freeze-thaw cycles.
Concentration	0.2 mg/ml (Please refer to the vial label for the specific concentration.)
Immunogen	Recombinant fragment of human GP2 protein (around aa 35-179)
Purification	Protein A/G purified



For full product information, images and publications, please visit our [website](#).

Date 2026 / 02 / 02 Page 1 of 2

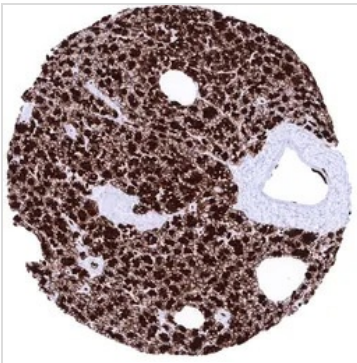
**Conjugation**

Unconjugated

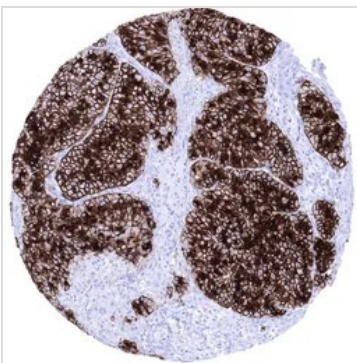
**Note**

For laboratory research use only. Not for any clinical, therapeutic, or diagnostic use in humans or animals. Not for animal or human consumption.

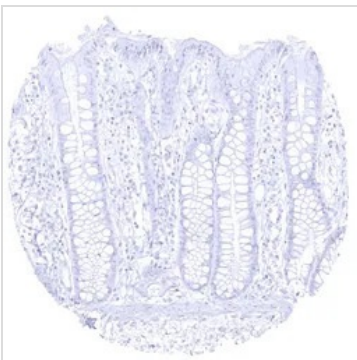
Purchasers shall not, and agree not to enable third parties to, analyze, copy, reverse engineer or otherwise attempt to determine the structure or sequence of the product.

**DATA IMAGES**

**GTX04436 IHC-P Image**

IHC-P analysis of human pancreas tissue using GTX04436 GP2 antibody [MSVA-475M] HistoMAX™. A strong GP2 staining is seen in acinar cells of the pancreas. The staining is cytoplasmic and membranous and shows a distinct apical predominance.


**GTX04436 IHC-P Image**

IHC-P analysis of human acinar cell carcinoma (ACC) from pancreas tissue using GTX04436 GP2 antibody [MSVA-475M] HistoMAX™. Acinar cell carcinoma showing strong GP2 immunostaining of all tumor cells.


**GTX04436 IHC-P Image**

IHC-P analysis of human mucosa from rectum tissue using GTX04436 GP2 antibody [MSVA-475M] HistoMAX™. GP2 immunostaining is completely lacking in rectal mucosa.



For full product information, images and publications, please visit our [website](#).