

## CTLA4 antibody [MSVA-152R] HistoMAX™

Cat. No. GTX04439

<b>Host</b>	Rabbit
<b>Clonality</b>	Monoclonal
<b>Isotype</b>	IgG
<b>Applications</b>	IHC-P
<b>Reactivity</b>	Human

References ( 1 )

Package

500 µl, 100 µl

## PRODUCT

This antibody was validated on 76 different Normal Tissues by IHC-P.

## Summary

[Go to Normal Tissue Gallery](#)
[Go to Cancer Tissue Gallery](#)

## Applications

## Application Note

\*Optimal dilutions/concentrations should be determined by the researcher.

## Suggested dilution

## Recommended dilution

IHC-P

1:50-1:100

**Note : Manual staining : Heat-induced antigen retrieval for 5 minutes in an autoclave at 121°C in pH 7.8 Tris-EDTA-based Target Retrieval Solution buffer.**

**This antibody has been validated by Autostainer including Agilent/Dako - Autostainer Link 48, Bond RX-Lecia, and Roche-Ventana Discovery ULTRA. The detailed steps by Autostainer please refer to the [protocol](#).**

Not tested in other applications.

## Product Note

**Highly recommended for IHC-P in human tissues.** Autostainer protocol information available

## Properties

<b>Form</b>	Liquid
<b>Buffer</b>	PBS, 0.05% BSA (Please contact us for PBS only format)
<b>Preservative</b>	0.05% sodium azide
<b>Storage</b>	Store as concentrated solution. Centrifuge briefly prior to opening vial. For short-term storage (1-2 weeks), store at 4°C. For long-term storage, aliquot and store at -20°C or below. Avoid multiple freeze-thaw cycles.
<b>Concentration</b>	0.2 mg/ml (Please refer to the vial label for the specific concentration.)
<b>Immunogen</b>	Recombinant fragment of human CTLA4 protein
<b>Purification</b>	Protein A/G purified



For full product information, images and publications, please visit our [website](#).

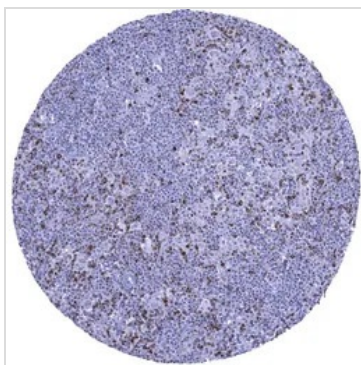
Date 2026 / 05 / 19 Page 1 of 2

**Conjugation** Unconjugated

**Note** For laboratory research use only. Not for any clinical, therapeutic, or diagnostic use in humans or animals. Not for animal or human consumption.

Purchasers shall not, and agree not to enable third parties to, analyze, copy, reverse engineer or otherwise attempt to determine the structure or sequence of the product.

## DATA IMAGES

**GTX04439 IHC-P Image**

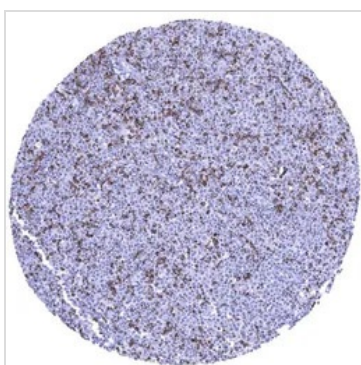
IHC-P analysis of human Hodgkin's lymphoma tissue using GTX04439 CTLA4 antibody [MSVA-152R] HistoMAX™.

Hodgkins lymphoma containing numerous reactive CTLA4 positive lymphocytes.

**GTX04439 IHC-P Image**

IHC-P analysis of human tonsil tissue using GTX04439 CTLA4 antibody [MSVA-152R] HistoMAX™.

Normal tonsil with CTLA4 staining of a subset of lymphocytes.

**GTX04439 IHC-P Image**

IHC-P analysis of human diffuse large B-cell lymphoma (DLBCL) tissue using GTX04439 CTLA4 antibody [MSVA-152R] HistoMAX™.

Diffuse large B cell lymphoma containing a large number of CTLA4 positive lymphocytes.



For full product information, images and publications, please visit our [website](#).