

TACSTD2 antibody [MSVA-733R] HistoMAX™

Cat. No. GTX04443

Host	Rabbit
Clonality	Monoclonal
Isotype	IgG
Applications	IHC-P
Reactivity	Human

Package

500 µl, 100 µl

PRODUCT

This antibody was validated on 76 different Normal Tissues by IHC-P.

Summary

[Go to Normal Tissue Gallery](#)[Go to Cancer Tissue Gallery](#)

Applications

Application Note

*Optimal dilutions/concentrations should be determined by the researcher.

Suggested dilution	Recommended dilution
--------------------	----------------------

IHC-P	1:100-1:200
-------	-------------

Note : Manual staining : Heat-induced antigen retrieval for 5 minutes in an autoclave at 121°C in pH 7.8 Tris-EDTA-based Target Retrieval Solution buffer.

This antibody has been validated by Autostainer including Agilent/Dako - Autostainer Link 48, Bond RX-Lecia, and Roche-Ventana Discovery ULTRA. The detailed steps by Autostainer please refer to the [protocol](#).

Not tested in other applications.

Product Note

Highly recommended for IHC-P in human tissues. Autostainer protocol information available

Properties

Form	Liquid
Buffer	PBS, 0.05% BSA (Please contact us for PBS only format)
Preservative	0.05% sodium azide
Storage	Store as concentrated solution. Centrifuge briefly prior to opening vial. For short-term storage (1-2 weeks), store at 4°C. For long-term storage, aliquot and store at -20°C or below. Avoid multiple freeze-thaw cycles.
Concentration	0.2 mg/ml (Please refer to the vial label for the specific concentration.)
Immunogen	Recombinant fragment of human TACSTD2 protein (around aa 31-274)
Purification	Protein A/G purified



For full product information, images and publications, please visit our [website](#).

Date 2025 / 06 / 18 Page 1 of 2

Conjugation

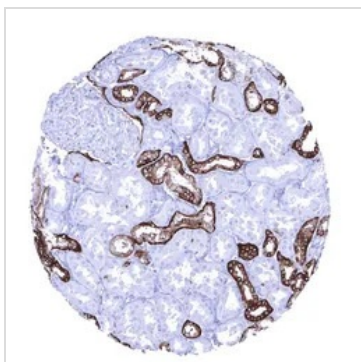
Unconjugated

Note

For laboratory research use only. Not for any clinical, therapeutic, or diagnostic use in humans or animals. Not for animal or human consumption.

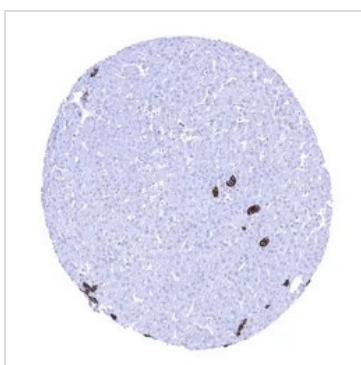
Purchasers shall not, and agree not to enable third parties to, analyze, copy, reverse engineer or otherwise attempt to determine the structure or sequence of the product.

DATA IMAGES



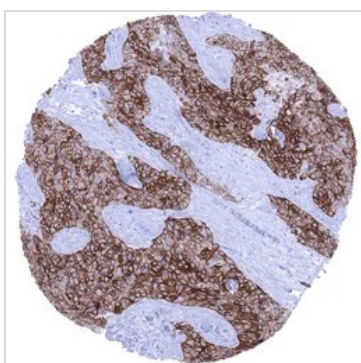
GTx04443 IHC-P Image

IHC-P analysis of human renal cortex tissue using GTx04443 TACSTD2 antibody [MSVA-733R] HistoMAX™. Kidney cortex In the kidney TACSTD2 immunostaining is strong in distal tubuli and collecting ducts but weaker in the parietal layer of the Bowman capsule.



GTx04443 IHC-P Image

IHC-P analysis of human liver tissue using GTx04443 TACSTD2 antibody [MSVA-733R] HistoMAX™. Strong TACSTD2 staining in intrahepatic bile ducts of the liver.



GTx04443 IHC-P Image

IHC-P analysis of human invasive breast cancer of no special type (NST) tissue using GTx04443 TACSTD2 antibody [MSVA-733R] HistoMAX™. Strong TACSTD2 immunostaining of a triple negative breast cancer of no special type (NST).



For full product information, images and publications, please visit our [website](#).