

CDH16 antibody [MSVA-516R] HistoMAX™

Cat. No. GTX04455

Host	Rabbit
Clonality	Monoclonal
Isotype	IgG
Applications	IHC-P
Reactivity	Human

References (2)

Package

500 µl, 100 µl

PRODUCT

This antibody was validated on 76 different Normal Tissues by IHC-P.

Summary

[Go to Normal Tissue Gallery](#)[Go to Cancer Tissue Gallery](#)

Applications

Application Note

*Optimal dilutions/concentrations should be determined by the researcher.

Suggested dilution	Recommended dilution
--------------------	----------------------

IHC-P	1:100-1:200
-------	-------------

Note : Manual staining : Heat-induced antigen retrieval for 5 minutes in an autoclave at 121°C in pH 7.8 Tris-EDTA-based Target Retrieval Solution buffer.

This antibody has been validated by Autostainer including Agilent/Dako - Autostainer Link 48 and BOND RX - Leica. The detailed steps by Autostainer please refer to the [protocol](#).

Not tested in other applications.

Product Note **Highly recommended for IHC-P in human tissues.**

Properties

Form	Liquid
Buffer	PBS, 0.05% BSA (Please contact us for PBS only format)
Preservative	0.05% sodium azide
Storage	Store as concentrated solution. Centrifuge briefly prior to opening vial. For short-term storage (1-2 weeks), store at 4°C. For long-term storage, aliquot and store at -20°C or below. Avoid multiple freeze-thaw cycles.
Concentration	0.2 mg/ml (Please refer to the vial label for the specific concentration.)
Immunogen	Recombinant human full-length CDH16 protein
Purification	Protein A/G purified



For full product information, images and publications, please visit our [website](#).

Date 2026 / 02 / 01 Page 1 of 2

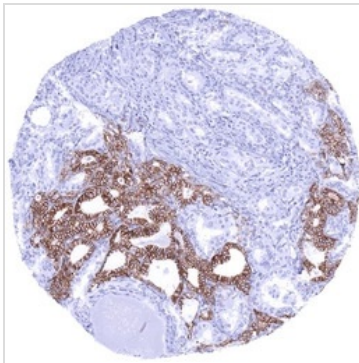
Conjugation

Unconjugated

Note

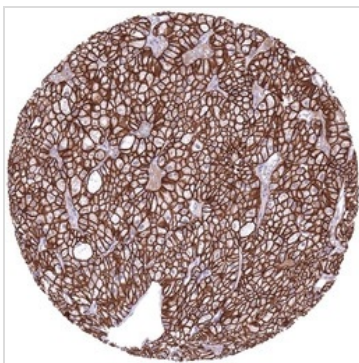
For laboratory research use only. Not for any clinical, therapeutic, or diagnostic use in humans or animals. Not for animal or human consumption.

Purchasers shall not, and agree not to enable third parties to, analyze, copy, reverse engineer or otherwise attempt to determine the structure or sequence of the product.

DATA IMAGES

GTX04455 IHC-P Image

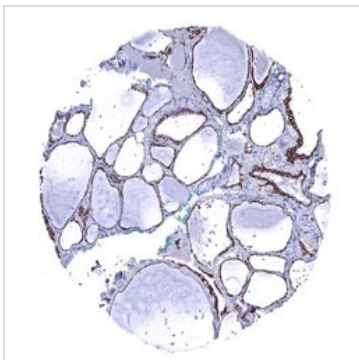
IHC-P analysis of human thyroid carcinoma tissue using GTX04455 CDH16 antibody [MSVA-516R] HistoMAX™.

CDH16 negative papillary carcinoma invading CDH16 positive normal thyroid CDH16 immunohistochemistry.


GTX04455 IHC-P Image

IHC-P analysis of human chromophobe renal cell carcinoma (ChRCC) from kidney tissue using GTX04455 CDH16 antibody [MSVA-516R] HistoMAX™.

Chromophobe renal cell carcinoma with strong CDH16 immunostaining of tumor cells CDH16 immunohistochemistry.


GTX04455 IHC-P Image

IHC-P analysis of human thyroid gland tissue using GTX04455 CDH16 antibody [MSVA-516R] HistoMAX™.

Strong membranous CDH16 staining of follicle cells CDH16 immunohistochemistry.


 For full product information, images and publications, please visit our [website](#).