

Nucleolin antibody [MSVA-623R] HistoMAX™

Cat. No. GTX04456

Host	Rabbit
Clonality	Monoclonal
Isotype	IgG
Applications	IHC-P
Reactivity	Human

Package

500 µl, 100 µl

PRODUCT

This antibody was validated on 76 different Normal Tissues by IHC-P.

Summary

[Go to Normal Tissue Gallery](#)

[Go to Cancer Tissue Gallery](#)

Applications

Application Note

*Optimal dilutions/concentrations should be determined by the researcher.

Suggested dilution Recommended dilution

IHC-P 1:100-1:200

Note : Manual staining : Heat-induced antigen retrieval for 5 minutes in an autoclave at 121°C in pH 7.8 Tris-EDTA-based Target Retrieval Solution buffer.

This antibody has been validated by Autostainer including Agilent/Dako - Autostainer Link 48, Bond RX-Lecia, and Roche-Ventana Discovery ULTRA. The detailed steps by Autostainer please refer to the [protocol](#).

Not tested in other applications.

Product Note

Highly recommended for IHC-P in human tissues. Autostainer protocol information available

Properties

Form	Liquid
Buffer	PBS, 0.05% BSA (Please contact us for PBS only format)
Preservative	0.05% sodium azide
Storage	Store as concentrated solution. Centrifuge briefly prior to opening vial. For short-term storage (1-2 weeks), store at 4°C. For long-term storage, aliquot and store at -20°C or below. Avoid multiple freeze-thaw cycles.
Concentration	0.2 mg/ml (Please refer to the vial label for the specific concentration.)
Immunogen	Recombinant full-length human NCL protein
Purification	Protein A/G purified



For full product information, images and publications, please visit our [website](#).

Date 2026 / 02 / 02 Page 1 of 2

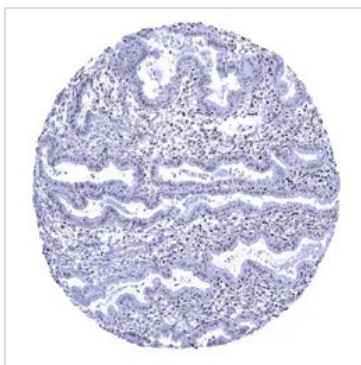
Conjugation

Unconjugated

Note

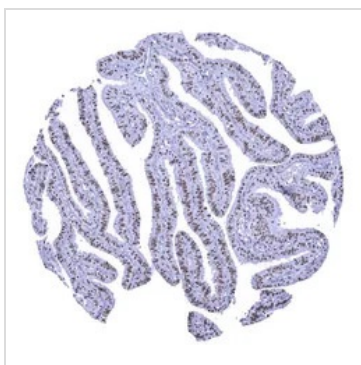
For laboratory research use only. Not for any clinical, therapeutic, or diagnostic use in humans or animals. Not for animal or human consumption.

Purchasers shall not, and agree not to enable third parties to, analyze, copy, reverse engineer or otherwise attempt to determine the structure or sequence of the product.

DATA IMAGES

GTx04456 IHC-P Image

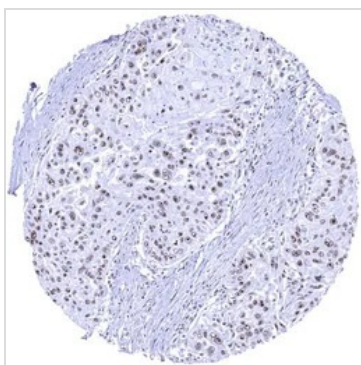
IHC-P analysis of human endometrium tissue using GTx04456 Nucleolin antibody [MSVA-623R] HistoMAX™.

In this sample of endometrium nucleolin staining is particularly prominent in the nucleoli of epithelial and stromal cells.


GTx04456 IHC-P Image

IHC-P analysis of human fallopian tube mucosa tissue using GTx04456 Nucleolin antibody [MSVA-623R] HistoMAX™.

The entire nuclei of epithelial cells are nucleolin positive but the immunostaining is most distinct in the nucleolus.


GTx04456 IHC-P Image

IHC-P analysis of human esophageal squamous cell carcinoma (ESCC) tissue using GTx04456 Nucleolin antibody [MSVA-623R] HistoMAX™.

Distinct nucleolin immunostaining in the nucleoli of an esophageal squamous cell carcinoma.



For full product information, images and publications, please visit our [website](https://www.genetex.com).