

SOX9 antibody [MSVA-709R] HistoMAX™

Cat. No. GTX04459

| | |
|--------------|------------|
| Host | Rabbit |
| Clonality | Monoclonal |
| Isotype | IgG |
| Applications | IHC-P |
| Reactivity | Human |

Package

500 µl, 100 µl

PRODUCT

This antibody was validated on 76 different Normal Tissues by IHC-P.

Summary

[Go to Normal Tissue Gallery](#)[Go to Cancer Tissue Gallery](#)

Applications

Application Note

*Optimal dilutions/concentrations should be determined by the researcher.

| Suggested dilution | Recommended dilution |
|--------------------|----------------------|
| IHC-P | 1:50-1:75 |

Note : Manual staining : Heat-induced antigen retrieval for 5 minutes in an autoclave at 121°C in pH 7.8 Tris-EDTA-based Target Retrieval Solution buffer.

Not tested in other applications.

Product Note **Highly recommended for IHC-P in human tissues.**

Properties

| | |
|---------------|--|
| Form | Liquid |
| Buffer | PBS, 0.05% BSA (Please contact us for PBS only format) |
| Preservative | 0.05% sodium azide |
| Storage | Store as concentrated solution. Centrifuge briefly prior to opening vial. For short-term storage (1-2 weeks), store at 4°C. For long-term storage, aliquot and store at -20°C or below. Avoid multiple freeze-thaw cycles. |
| Concentration | 0.2 mg/ml (Please refer to the vial label for the specific concentration.) |
| Immunogen | Recombinant humanSOX9 protein fragment (around aa 393- 508) |
| Purification | Protein A/G purified |
| Conjugation | Unconjugated |



For full product information, images and publications, please visit our [website](#).

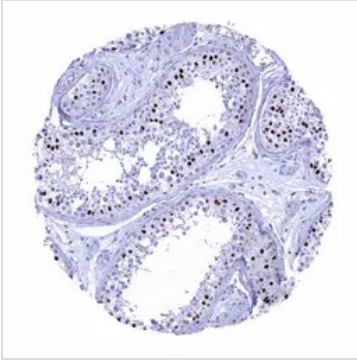
Date 2025 / 12 / 07 Page 1 of 2

For laboratory research use only. Not for any clinical, therapeutic, or diagnostic use in humans or animals. Not for animal or human consumption.

Note

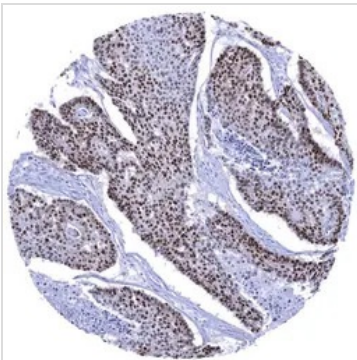
Purchasers shall not, and agree not to enable third parties to, analyze, copy, reverse engineer or otherwise attempt to determine the structure or sequence of the product.

DATA IMAGES



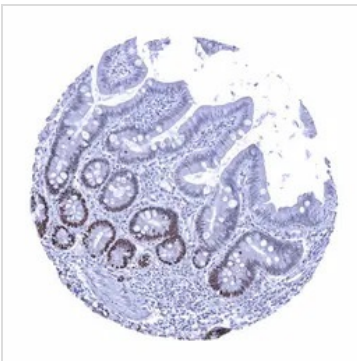
GTx04459 IHC-P Image

IHC-P analysis of human testis tissue using GTx04459 SOX9 antibody [MSVA-709R] HistoMAX™. Strong SOX9 staining of Sertoli cells.



GTx04459 IHC-P Image

IHC-P analysis of human esophageal squamous cell carcinoma (ESCC) tissue using GTx04459 SOX9 antibody [MSVA-709R] HistoMAX™. Squamous cell carcinoma with strong SOX9 immunostaining of most tumor cells.



GTx04459 IHC-P Image

IHC-P analysis of human mucosa from duodenum tissue using GTx04459 SOX9 antibody [MSVA-709R] HistoMAX™. Strong nuclear SOX9 staining of crypt epithelial cells. The SOX9 staining intensity markedly decreases towards the surface epithelium and the tips of the villusities remain SOX9 negative.



For full product information, images and publications, please visit our [website](#).