

## TRIM29 antibody [MSVA-629M] HistoMAX™

Cat. No. GTX04467

|                     |            |
|---------------------|------------|
| <b>Host</b>         | Mouse      |
| <b>Clonality</b>    | Monoclonal |
| <b>Isotype</b>      | IgG2b      |
| <b>Applications</b> | IHC-P      |
| <b>Reactivity</b>   | Human      |

## Package

500 µl, 100 µl

## PRODUCT

This antibody was validated on 76 different Normal Tissues by IHC-P.

## Summary

[Go to Normal Tissue Gallery](#)
[Go to Cancer Tissue Gallery](#)

## Applications

## Application Note

\*Optimal dilutions/concentrations should be determined by the researcher.

| Suggested dilution | Recommended dilution |
|--------------------|----------------------|
| IHC-P              | 1:100-1:200          |

**Note : Manual staining : Heat-induced antigen retrieval for 5 minutes in an autoclave at 121°C in pH 7.8 Tris-EDTA-based Target Retrieval Solution buffer.**

**This antibody has been validated by Autostainer including Agilent/Dako - Autostainer Link 48, Bond RX-Lecia, and Roche-Ventana Discovery ULTRA. The detailed steps by Autostainer please refer to the [protocol](#).**

Not tested in other applications.

**Product Note**      **Highly recommended for IHC-P in human tissues.**

## Properties

|                      |  |
|----------------------|--|
| <b>Form</b>          | Liquid   |
| <b>Buffer</b>        | PBS, 0.05% BSA (Please contact us for PBS only format)   |
| <b>Preservative</b>  | 0.05% sodium azide   |
| <b>Storage</b>       | Store as concentrated solution. Centrifuge briefly prior to opening vial. For short-term storage (1-2 weeks), store at 4°C. For long-term storage, aliquot and store at -20°C or below. Avoid multiple freeze-thaw cycles. |
| <b>Concentration</b> | 0.2 mg/ml (Please refer to the vial label for the specific concentration.)   |
| <b>Immunogen</b>     | Recombinant fragment (126 Amino acid residues between aa 1-200) of human TRIM29 protein  |
| <b>Purification</b>  | Protein A/G purified   |

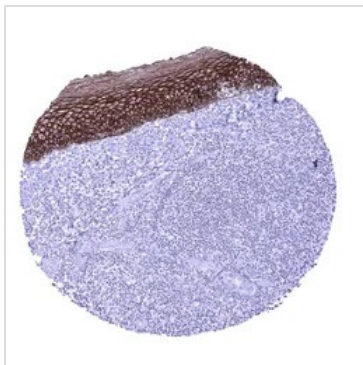


For full product information, images and publications, please visit our [website](#).

**Conjugation** Unconjugated

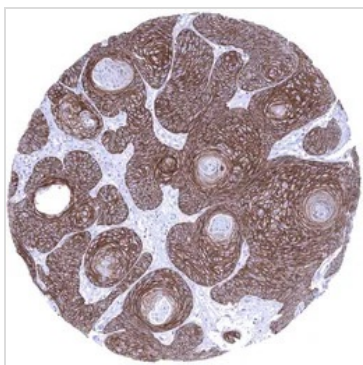
**Note** For laboratory research use only. Not for any clinical, therapeutic, or diagnostic use in humans or animals. Not for animal or human consumption.  
Purchasers shall not, and agree not to enable third parties to, analyze, copy, reverse engineer or otherwise attempt to determine the structure or sequence of the product.

DATA IMAGES



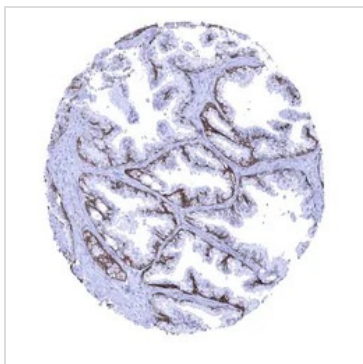
**GTX04467 IHC-P Image**

IHC-P analysis of human tonsil tissue using GTX04467 TRIM29 antibody [MSVA-629M] HistoMAX™. A strong membranous and cytoplasmic TRIM29 immunostaining is seen in squamous epithelial cells of the tonsil surface.



**GTX04467 IHC-P Image**

IHC-P analysis of human anal canal squamous cell carcinoma (SCC) tissue using GTX04467 TRIM29 antibody [MSVA-629M] HistoMAX™. Anal canal Squamous cell carcinoma with strong TRIM29 immunostaining of tumor cells.



**GTX04467 IHC-P Image**

IHC-P analysis of human prostate tissue using GTX04467 TRIM29 antibody [MSVA-629M] HistoMAX™. A moderate intensity predominantly membranous TRIM29 staining is seen in basal cells of the prostate.



For full product information, images and publications, please visit our [website](#).