

Hepatocyte Specific Antigen antibody [MSVA-OCE5] HistoMAX™

Cat. No. GTX04478

Host	Mouse
Clonality	Monoclonal
Isotype	IgG1
Applications	IHC-P
Reactivity	Human

Package

500 µl, 100 µl

PRODUCT

This antibody was validated on 76 different Normal Tissues by IHC-P.

Summary

[Go to Normal Tissue Gallery](#)

[Go to Cancer Tissue Gallery](#)

Applications

Application Note

*Optimal dilutions/concentrations should be determined by the researcher.

Suggested dilution Recommended dilution

IHC-P 1:100-1:200

Note : Manual staining : Heat-induced antigen retrieval for 5 minutes in an autoclave at 121°C in pH 7.8 Tris-EDTA-based Target Retrieval Solution buffer.

This antibody has been validated by Autostainer including Agilent/Dako - Autostainer Link 48, Bond RX-Lecia, and Roche-Ventana Discovery ULTRA. The detailed steps by Autostainer please refer to the [protocol](#).

Not tested in other applications.

Product Note **Highly recommended for IHC-P in human tissues.**

Properties

Form	Liquid
Buffer	PBS, 0.05% BSA (Please contact us for PBS only format)
Preservative	0.05% sodium azide
Storage	Store as concentrated solution. Centrifuge briefly prior to opening vial. For short-term storage (1-2 weeks), store at 4°C. For long-term storage, aliquot and store at -20°C or below. Avoid multiple freeze-thaw cycles.
Concentration	0.2 mg/ml (Please refer to the vial label for the specific concentration.)
Immunogen	Extract of a formalin-fixed, rejected-allograft of a human liver
Purification	Protein A/G purified



For full product information, images and publications, please visit our [website](#).

Conjugation

Unconjugated

Note

For laboratory research use only. Not for any clinical, therapeutic, or diagnostic use in humans or animals. Not for animal or human consumption.

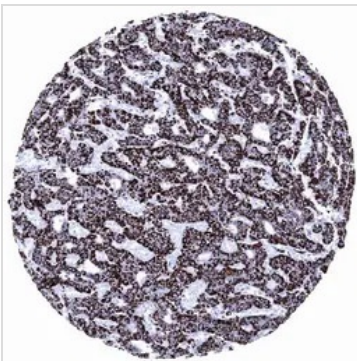
Purchasers shall not, and agree not to enable third parties to, analyze, copy, reverse engineer or otherwise attempt to determine the structure or sequence of the product.

DATA IMAGES

GTX04478 IHC-P Image

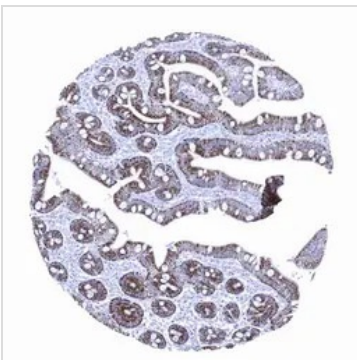
IHC-P analysis of human liver tissue using GTX04478 Hepatocyte Specific Antigen antibody [MSVA-OCE5] HistoMAX™.

Strong Hepatocyte staining in hepatocytes while other structures of the liver remain negative.


GTX04478 IHC-P Image

IHC-P analysis of human hepatocellular carcinoma (HCC) tissue using GTX04478 Hepatocyte Specific Antigen antibody [MSVA-OCE5] HistoMAX™.

Hepatocellular carcinoma with strong Hepatocyte immunostaining of all tumor cells.


GTX04478 IHC-P Image

IHC-P analysis of human liver tissue using GTX04478 Hepatocyte Specific Antigen antibody [MSVA-OCE5] HistoMAX™.

Moderate to strong Hepatocyte immunostaining in epithelial cells of the duodenum.



For full product information, images and publications, please visit our [website](#).