

TRPS1 antibody [MSVA-512R] HistoMAX™

Cat. No. GTX04485

Host	Rabbit
Clonality	Monoclonal
Isotype	IgG
Applications	IHC-P
Reactivity	Human

Package

500 µl, 100 µl

PRODUCT

This antibody was validated on 76 different Normal Tissues by IHC-P.

Summary

[Go to Normal Tissue Gallery](#)

[Go to Cancer Tissue Gallery](#)

Applications

Application Note

*Optimal dilutions/concentrations should be determined by the researcher.

Suggested dilution	Recommended dilution
IHC-P	1:100-1:200
Note : Manual staining : Heat-induced antigen retrieval for 5 minutes in an autoclave at 121°C in pH 7.8 Tris-EDTA-based Target Retrieval Solution buffer.	

Not tested in other applications.

Product Note

Highly recommended for IHC-P in human tissues.

Properties

Form	Liquid
Buffer	PBS, 0.05% BSA (Please contact us for PBS only format)
Preservative	0.05% sodium azide
Storage	Store as concentrated solution. Centrifuge briefly prior to opening vial. For short-term storage (1-2 weeks), store at 4°C. For long-term storage, aliquot and store at -20°C or below. Avoid multiple freeze-thaw cycles.
Concentration	0.2 mg/ml (Please refer to the vial label for the specific concentration.)
Immunogen	Recombinant fragment (around aa900-1100) of human TRPS1 protein
Purification	Protein A/G purified
Conjugation	Unconjugated



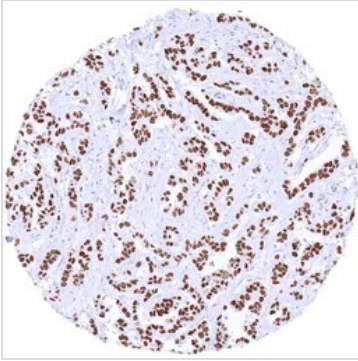
For full product information, images and publications, please visit our [website](#).

For laboratory research use only. Not for any clinical, therapeutic, or diagnostic use in humans or animals. Not for animal or human consumption.

Note

Purchasers shall not, and agree not to enable third parties to, analyze, copy, reverse engineer or otherwise attempt to determine the structure or sequence of the product.

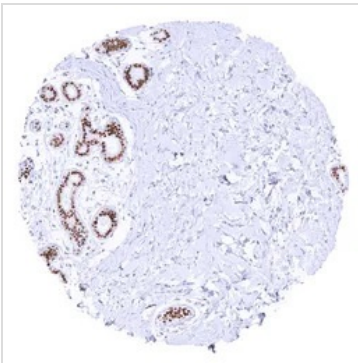
DATA IMAGES



GTX04485 IHC-P Image

IHC-P analysis of human invasive breast cancer of no special type (NST) tissue using GTX04485 TRPS1 antibody [MSVA-512R] HistoMAX™.

Invasive breast cancer of no special type NST with intense nuclear TRPS1 positivity.



GTX04485 IHC-P Image

IHC-P analysis of human breast tissue using GTX04485 TRPS1 antibody [MSVA-512R] HistoMAX™.

Intense nuclear TRPS1 staining of luminal but not basal breast epithelial cells.



GTX04485 IHC-P Image

IHC-P analysis of human appendix tissue using GTX04485 TRPS1 antibody [MSVA-512R] HistoMAX™.

Appendical epithelial cells are TRPS1 negative but nuclear TRPS1 positivity occurs in stromal cells.



For full product information, images and publications, please visit our [website](#).