

# BRG1 antibody [MSVA-397R] HistoMAX™

**Cat. No. GTX04486**

<b>Host</b>	Rabbit
<b>Clonality</b>	Monoclonal
<b>Isotype</b>	IgG
<b>Applications</b>	IHC-P
<b>Reactivity</b>	Human

## Package

500 µl, 100 µl

## PRODUCT

This antibody was validated on 76 different Normal Tissues by IHC-P.

## Summary

[Go to Normal Tissue Gallery](#)

[Go to Cancer Tissue Gallery](#)

## Applications

### Application Note

\*Optimal dilutions/concentrations should be determined by the researcher.

Suggested dilution	Recommended dilution
IHC-P	1:100-1:200

**Note : Manual staining : Heat-induced antigen retrieval for 5 minutes in an autoclave at 121°C in pH 7.8 Tris-EDTA-based Target Retrieval Solution buffer.**

Not tested in other applications.

## Product Note

**Highly recommended for IHC-P in human tissues.**

## Properties

<b>Form</b>	Liquid
<b>Buffer</b>	PBS, 0.05% BSA (Please contact us for PBS only format)
<b>Preservative</b>	0.05% sodium azide
<b>Storage</b>	Store as concentrated solution. Centrifuge briefly prior to opening vial. For short-term storage (1-2 weeks), store at 4°C. For long-term storage, aliquot and store at -20°C or below. Avoid multiple freeze-thaw cycles.
<b>Concentration</b>	0.2 mg/ml (Please refer to the vial label for the specific concentration.)
<b>Immunogen</b>	Recombinant fragment (around aa 190-400) of human SMARCA4 protein
<b>Purification</b>	Protein A/G purified
<b>Conjugation</b>	Unconjugated



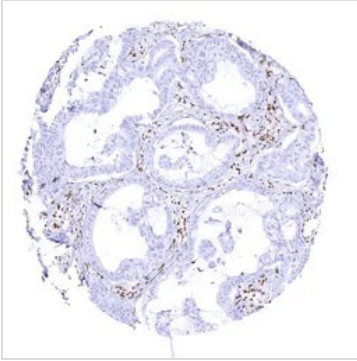
For full product information, images and publications, please visit our [website](#).

For laboratory research use only. Not for any clinical, therapeutic, or diagnostic use in humans or animals. Not for animal or human consumption.

**Note**

Purchasers shall not, and agree not to enable third parties to, analyze, copy, reverse engineer or otherwise attempt to determine the structure or sequence of the product.

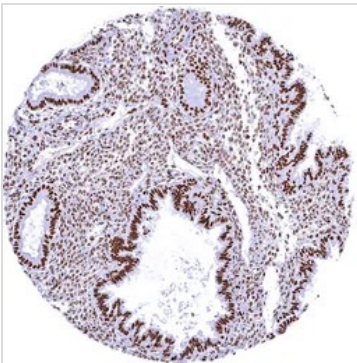
#### DATA IMAGES



##### **GTX04486 IHC-P Image**

IHC-P analysis of human pulmonary adenocarcinoma tissue using GTX04486 BRG1 antibody [MSVA-397R] HistoMAX™.

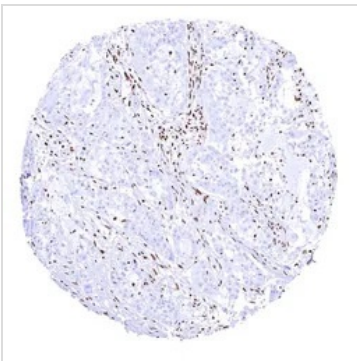
Pulmonary adenocarcinoma with complete loss of BRG1 staining of tumor cells.



##### **GTX04486 IHC-P Image**

IHC-P analysis of human endometrium tissue using GTX04486 BRG1 antibody [MSVA-397R] HistoMAX™.

Intense nuclear BRG1 staining of all cell types of the endometrium.



##### **GTX04486 IHC-P Image**

IHC-P analysis of human pancreatic ductal adenocarcinoma (PDAC) tissue using GTX04486 BRG1 antibody [MSVA-397R] HistoMAX™.

Ductal adenocarcinoma of the pancreas with complete loss of BRG1 staining in all tumor cells.



For full product information, images and publications, please visit our [website](#).