

TFF1 antibody [MSVA-482M] HistoMAX™

Cat. No. GTX04488

Host	Mouse
Clonality	Monoclonal
Isotype	IgG2a
Applications	IHC-P
Reactivity	Human

References (1)

Package

500 µl, 100 µl

PRODUCT

This antibody was validated on 76 different Normal Tissues by IHC-P.

Summary

[Go to Normal Tissue Gallery](#)[Go to Cancer Tissue Gallery](#)

Applications

Application Note

*Optimal dilutions/concentrations should be determined by the researcher.

Suggested dilution	Recommended dilution
--------------------	----------------------

IHC-P	1:100-1:200
-------	-------------

Note : Manual staining : Heat-induced antigen retrieval for 5 minutes in an autoclave at 121°C in pH 7.8 Tris-EDTA-based Target Retrieval Solution buffer.

Not tested in other applications.

Product Note

Highly recommended for IHC-P in human tissues.

Properties

Form	Liquid
Buffer	PBS, 0.05% BSA (Please contact us for PBS only format)
Preservative	0.05% sodium azide
Storage	Store as concentrated solution. Centrifuge briefly prior to opening vial. For short-term storage (1-2 weeks), store at 4°C. For long-term storage, aliquot and store at -20°C or below. Avoid multiple freeze-thaw cycles.
Concentration	0.2 mg/ml (Please refer to the vial label for the specific concentration.)
Immunogen	Recombinant fragment (around aa1-88) of human TFF1protein
Purification	Protein A/G purified
Conjugation	Unconjugated



For full product information, images and publications, please visit our [website](#).

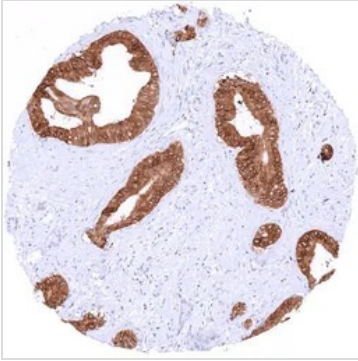
Date 2025 / 12 / 05 Page 1 of 2

For laboratory research use only. Not for any clinical, therapeutic, or diagnostic use in humans or animals. Not for animal or human consumption.

Note

Purchasers shall not, and agree not to enable third parties to, analyze, copy, reverse engineer or otherwise attempt to determine the structure or sequence of the product.

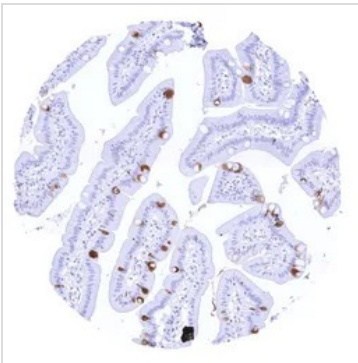
DATA IMAGES



GTx04488 IHC-P Image

IHC-P analysis of human pancreatic ductal adenocarcinoma (PDAC) tissue using GTx04488 TFF1 antibody [MSVA-482M] HistoMAX™.

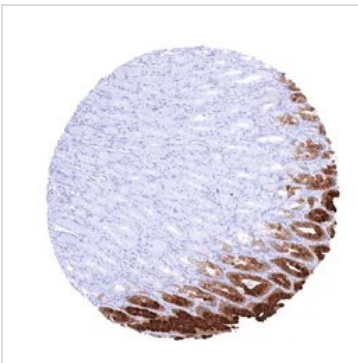
Ductal adenocarcinoma of the pancreas with strong TFF1 staining of all tumor cells.



GTx04488 IHC-P Image

IHC-P analysis of human mucosa from duodenum tissue using GTx04488 TFF1 antibody [MSVA-482M] HistoMAX™.

Duodenal mucosa with a moderate to strong TFF1 positivity of selected goblet cells.



GTx04488 IHC-P Image

IHC-P analysis of human stomach tissue using GTx04488 TFF1 antibody [MSVA-482M] HistoMAX™.

Surface epithelial cells of the stomach showing an intense cytoplasmic TFF1 staining.



For full product information, images and publications, please visit our [website](#).