

## OMP antibody

Cat. No. GTX04493

Host	Rabbit
Clonality	Polyclonal
Isotype	IgG
Applications	WB, IHC-P
Reactivity	Human, Rat

Package  
100 µl

## Applications

## Application Note

\*Optimal dilutions/concentrations should be determined by the researcher.

Suggested dilution	Recommended dilution
WB	1:500-1:2000
IHC-P	1:50-1:200

Not tested in other applications.

Calculated MW 19 kDa. ( [Note](#) )

## Properties

Form	Liquid
Buffer	PBS, 150mM NaCl, 50% Glycerol
Preservative	0.02% Sodium azide
Storage	Store as concentrated solution. Centrifuge briefly prior to opening vial. For short-term storage (1-2 weeks), store at 4°C. For long-term storage, aliquot and store at -20°C or below. Avoid multiple freeze-thaw cycles.
Concentration	1 mg/ml (Please refer to the vial label for the specific concentration.)
Immunogen	A synthesized peptide derived from human OMP(Accession P47874), corresponding to amino acid residues R62-S112.
Purification	Purified by antigen-affinity chromatography From serum
Conjugation	Unconjugated

## Note

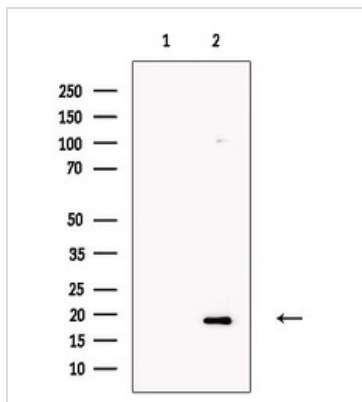
For laboratory research use only. Not for any clinical, therapeutic, or diagnostic use in humans or animals. Not for animal or human consumption.

Purchasers shall not, and agree not to enable third parties to, analyze, copy, reverse engineer or otherwise attempt to determine the structure or sequence of the product.



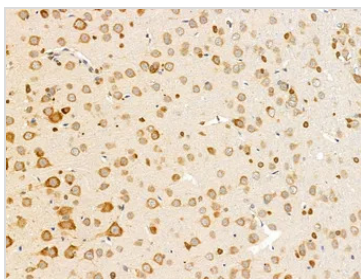
For full product information, images and publications, please visit our [website](#).

## DATA IMAGES



### GTx04493 WB Image

WB analysis of HepG2 whole cell lysates using GTx0493 OMP antibody. The lane on the left was treated with blocking peptide.



### GTx04493 IHC-P Image

IHC-P analysis of rat brain tissue using GTx0493 OMP antibody.

Antigen retrieval : Heat mediated citrate buffer.

Dilution : 1:100



For full product information, images and publications, please visit our [website](https://www.genetex.com).