

## Integrin beta 4 antibody

**Cat. No. GTX04496**

<b>Host</b>	Rabbit
<b>Clonality</b>	Polyclonal
<b>Isotype</b>	IgG
<b>Applications</b>	WB, IHC-P, FCM, ELISA
<b>Reactivity</b>	Human, Mouse, Rat

**Package**  
100 µg

## Applications

**Application Note**

\*Optimal dilutions/concentrations should be determined by the researcher.

Suggested dilution	Recommended dilution
WB	0.1-0.25µg/ml
IHC-P	0.5-1µg/ml
FCM	1-3µg/1x10 <sup>6</sup> cells
ELISA	0.1-0.5µg/ml

Not tested in other applications.

**Calculated MW** 202 kDa. ([Note](#))

## Properties

<b>Form</b>	Liquid
<b>Buffer</b>	4mg Trehalose, 0.9mg NaCl, 0.2mg Na <sub>2</sub> HPO <sub>4</sub>
<b>Preservative</b>	0.01mg Sodium azide
<b>Storage</b>	Store as concentrated solution. Centrifuge briefly prior to opening vial. For short-term storage (1-2 weeks), store at 4°C. For long-term storage, aliquot and store at -20°C or below. Avoid multiple freeze-thaw cycles.
<b>Concentration</b>	0.5 mg/ml (Please refer to the vial label for the specific concentration.)
<b>Immunogen</b>	E.coli-derived human Integrin beta 4/ITGB4 recombinant protein (R29-K431)
<b>Purification</b>	Purified by antigen-affinity chromatography
<b>Conjugation</b>	Unconjugated

**Note**

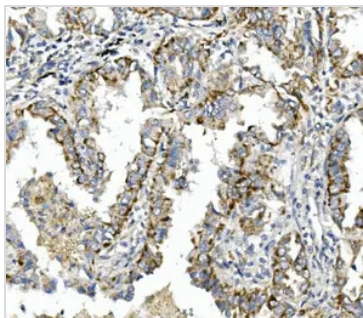
For laboratory research use only. Not for any clinical, therapeutic, or diagnostic use in humans or animals. Not for animal or human consumption.

Purchasers shall not, and agree not to enable third parties to, analyze, copy, reverse engineer or otherwise attempt to determine the structure or sequence of the product.



For full product information, images and publications, please visit our [website](#).

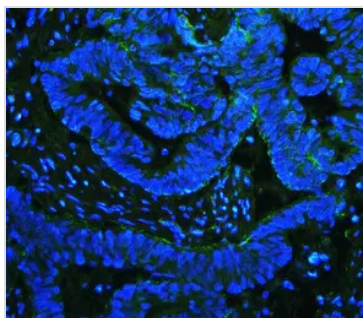
## DATA IMAGES

**GTX04496 IHC-P Image**

IHC-P analysis of human lung cancer tissue using GTX04496 Integrin beta 4 antibody.

Antigen retrieval : Heat mediated EDTA buffer (pH 8.0)

Dilution : 1 µg/mL

**GTX04496 IHC-P Image**

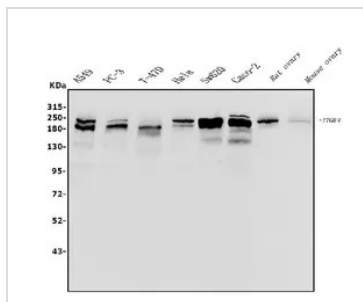
IHC-P analysis of human intestinal cancer tissue using GTX04496 Integrin beta 4 antibody.

Green : Primary antibody

Blue : DAPI

Antigen retrieval : Heat mediated EDTA buffer (pH 8.0)

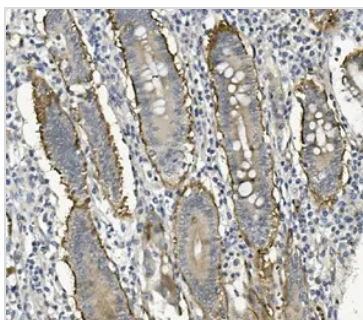
Dilution : 4 µg/mL

**GTX04496 WB Image**

WB analysis of various samples using GTX04496 Integrin beta 4 antibody.

Dilution : 0.25 µg/mL

Loading : 50 µg

**GTX04496 IHC-P Image**

IHC-P analysis of human rectal cancer tissue using GTX04496 Integrin beta 4 antibody.

Antigen retrieval : Heat mediated EDTA buffer (pH 8.0)

Dilution : 1 µg/mL



For full product information, images and publications, please visit our [website](#).