

# Vimentin antibody

**Cat. No. GTX04497**

<b>Host</b>	Rabbit
<b>Clonality</b>	Polyclonal
<b>Isotype</b>	IgG
<b>Applications</b>	WB, ICC/IF, IHC-P
<b>Reactivity</b>	Human, Mouse, Rat

**Package**  
100 µl

## Applications

### Application Note

\*Optimal dilutions/concentrations should be determined by the researcher.

Suggested dilution	Recommended dilution
WB	1:500-1:2000
ICC/IF	1:200
IHC-P	1:50-1:200

Not tested in other applications.

**Calculated MW** 54 kDa. ( [Note](#) )

## Properties

<b>Form</b>	Liquid
<b>Buffer</b>	PBS, 150mM NaCl
<b>Preservative</b>	No preservatives
<b>Storage</b>	Store as concentrated solution. Centrifuge briefly prior to opening vial. For short-term storage (1-2 weeks), store at 4°C. For long-term storage, aliquot and store at -20°C or below. Avoid multiple freeze-thaw cycles.
<b>Concentration</b>	1 mg/ml (Please refer to the vial label for the specific concentration.)
<b>Immunogen</b>	A synthesized peptide derived from human VIM(Accession P08670), corresponding to amino acid residues R424-E466.
<b>Purification</b>	Purified by antigen-affinity chromatography From serum
<b>Conjugation</b>	Unconjugated

### Note

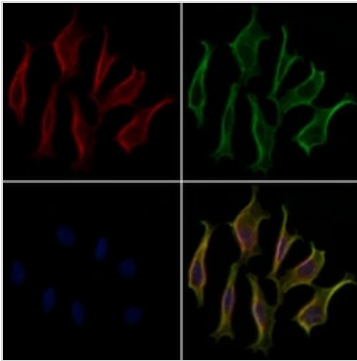
For laboratory research use only. Not for any clinical, therapeutic, or diagnostic use in humans or animals. Not for animal or human consumption.

Purchasers shall not, and agree not to enable third parties to, analyze, copy, reverse engineer or otherwise attempt to determine the structure or sequence of the product.



For full product information, images and publications, please visit our [website](#).

## DATA IMAGES



### GTX04497 ICC/IF Image

ICC/IF analysis of PFA fixed HeLa cells using GTX04497 Vimentin antibody.

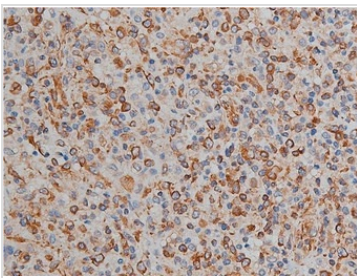
Red : Primary antibody

Green : Beta tubulin

Blue : DAPI

Permeabilization : 0.1% Triton X-100

Dilution : 1:200

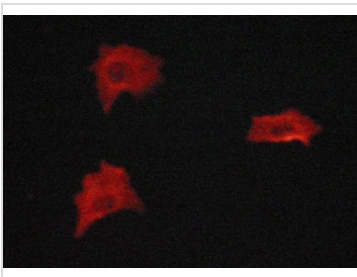


### GTX04497 IHC-P Image

IHC-P analysis of human lymphoma tissue using GTX04497 Vimentin antibody.

Antigen retrieval : Heat mediated citrate buffer

Dilution : 1:200

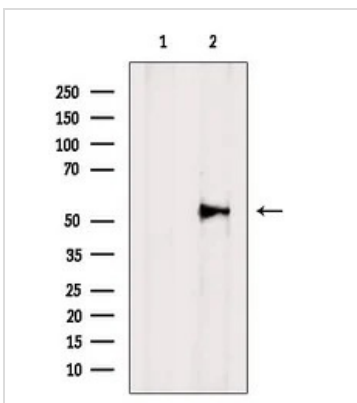


### GTX04497 ICC/IF Image

ICC/IF analysis of PFA fixed A549 cells using GTX04497 Vimentin antibody.

Permeabilization : 0.1% saponin

Dilution : 1:400



### GTX04497 WB Image

WB analysis of mouse lung tissue lysates using GTX04497 Vimentin antibody. The lane on the left was treated with blocking peptide.



For full product information, images and publications, please visit our [website](https://www.genetex.com).