

Dectin-1 antibody

Cat. No. GTX04506

Host	Rabbit
Clonality	Polyclonal
Isotype	IgG
Applications	WB, IHC-P, FCM, ELISA
Reactivity	Mouse

Package
100 µg

Applications

Application Note

*Optimal dilutions/concentrations should be determined by the researcher.

Suggested dilution	Recommended dilution
WB	0.25-0.5µg/ml
IHC-P	2-5µg/ml
FCM	1-3µg/1x10 ⁶ cells
ELISA	0.1-0.5µg/ml

Not tested in other applications.

Properties

Form	Liquid
Buffer	4mg Trehalose, 0.9mg NaCl, 0.2mg Na ₂ HPO ₄
Preservative	No preservatives
Storage	Store as concentrated solution. Centrifuge briefly prior to opening vial. For short-term storage (1-2 weeks), store at 4°C. For long-term storage, aliquot and store at -20°C or below. Avoid multiple freeze-thaw cycles.
Concentration	0.5 mg/ml (Please refer to the vial label for the specific concentration.)
Immunogen	E.coli-derived mouse Dectin-1/Clec7a recombinant protein (Position: Q17-L244)
Purification	Purified by antigen-affinity chromatography
Conjugation	Unconjugated

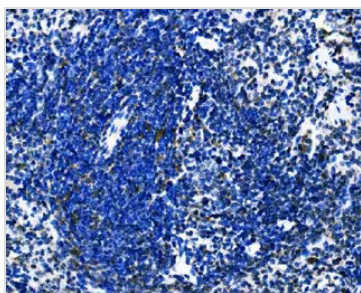
Note For laboratory research use only. Not for any clinical, therapeutic, or diagnostic use in humans or animals. Not for animal or human consumption.

Purchasers shall not, and agree not to enable third parties to, analyze, copy, reverse engineer or otherwise attempt to determine the structure or sequence of the product.



For full product information, images and publications, please visit our [website](#).

DATA IMAGES

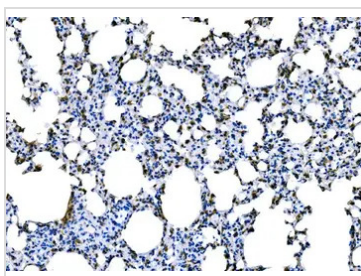


GTX04506 IHC-P Image

IHC-P analysis of mouse spleen tissue using GTX04506 Dectin-1 antibody.

Antigen retrieval : Heat mediated EDTA buffer (pH 8.0)

Dilution : 2 µg/mL

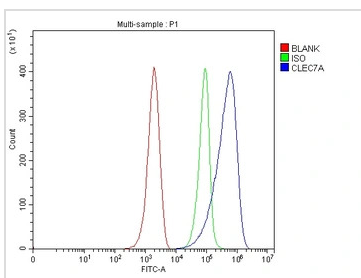


GTX04506 IHC-P Image

IHC-P analysis of mouse lung tissue using GTX04506 Dectin-1 antibody.

Antigen retrieval : Heat mediated EDTA buffer (pH 8.0)

Dilution : 2 µg/mL



GTX04506 FCM Image

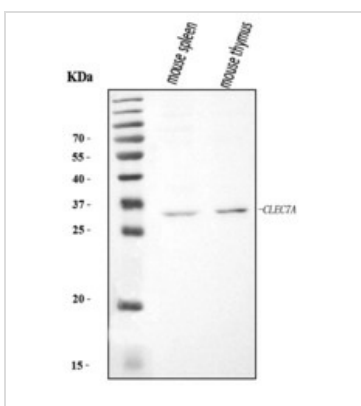
FACS analysis of ANA-1 cells using GTX04506 Dectin-1 antibody.

Blue : Primary antibody

Green : Isotype control

Red : Unlabelled sample

Dilution : 1µg/1x10⁶ cells



GTX04506 WB Image

WB analysis of various sample lysates using GTX04506 Dectin-1 antibody.

Lane 1 : mouse spleen tissue lysate

Lane 2 : mouse thymus tissue lysate

Loading : 30 µg

Dilution : 0.5 µg/mL



For full product information, images and publications, please visit our [website](#).