

MAP1A antibody

Cat. No. GTX04514

Host	Rabbit
Clonality	Polyclonal
Isotype	IgG
Applications	WB, ICC/IF, IHC-P
Reactivity	Human, Mouse, Rat

Package
100 µl

Applications

Application Note

*Optimal dilutions/concentrations should be determined by the researcher.

Suggested dilution	Recommended dilution
WB	1:1000-1:3000
ICC/IF	1:100-1:500
IHC-P	1:50-1:200

Not tested in other applications.

Calculated MW 305 kDa. ([Note](#))

Properties

Form	Liquid
Buffer	PBS, 150mM NaCl, 50% Glycerol
Preservative	0.02% Sodium azide
Storage	Store as concentrated solution. Centrifuge briefly prior to opening vial. For short-term storage (1-2 weeks), store at 4°C. For long-term storage, aliquot and store at -20°C or below. Avoid multiple freeze-thaw cycles.
Concentration	1 mg/ml (Please refer to the vial label for the specific concentration.)
Immunogen	A synthesized peptide derived from human MAP1A(Accession P78559), corresponding to amino acid residues E1882-S1932.
Purification	Purified by antigen-affinity chromatography From serum
Conjugation	Unconjugated

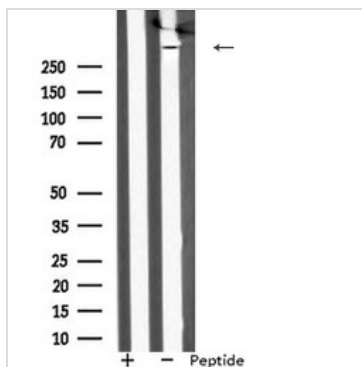
For full product information, images and publications, please visit our [website](#).

For laboratory research use only. Not for any clinical, therapeutic, or diagnostic use in humans or animals. Not for animal or human consumption.

Note

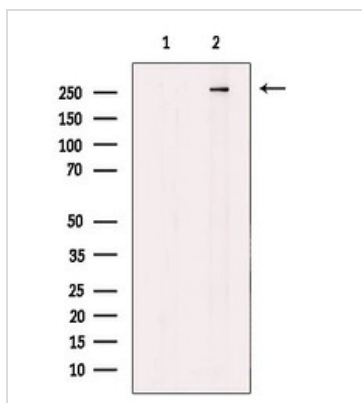
Purchasers shall not, and agree not to enable third parties to, analyze, copy, reverse engineer or otherwise attempt to determine the structure or sequence of the product.

DATA IMAGES



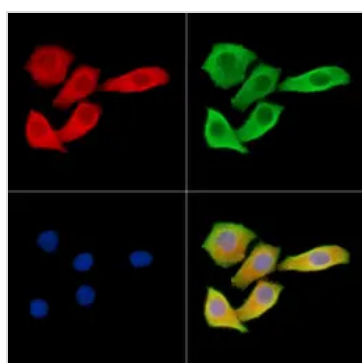
GTx04514 WB Image

WB analysis of COLO205 whole cell lysates using GTx04514 MAP1A antibody. The lane on the left was treated with blocking peptide.



GTx04514 WB Image

WB analysis of COLO205 whole cell lysates using GTx04514 MAP1A antibody. The lane on the left was treated with blocking peptide.



GTx04514 ICC/IF Image

ICC/IF analysis of PFA fixed HeLa cells using GTx04514 MAP1A antibody.

Red : Primary antibody

Green : Beta tubulin

Blue : DAPI



For full product information, images and publications, please visit our [website](#).