

GST tag antibody (AP)

Cat. No. GTX04517

Host	Rabbit
Clonality	Polyclonal
Isotype	IgG
Applications	WB, IHC-P, ELISA
Reactivity	Species independent

Package
100 µg

Applications

Application Note

*Optimal dilutions/concentrations should be determined by the researcher.

Suggested dilution	Recommended dilution
WB	1:500-1:2500
IHC-P	1:200-1:1000
ELISA	1:2000-1:10000

Not tested in other applications.

Product Note

Assay by immunoelectrophoresis resulted in a single precipitin arc against anti-Rabbit Serum, anti-Alkaline Phosphatase, as well as purified and partially purified Glutathione-S-Transferase [*Schistosoma japonicum*]. Cross reactivity against Glutathione-S-Transferase from other sources may occur but has not been specifically determined.

Properties

Form	Liquid
Buffer	50mM Tris-HCl, 150mM NaCl, 1mM MgCl ₂ , 0.1mM ZnCl ₂ , 1% BSA, 50% Glycerol
Preservative	0.01% (w/v) Sodium azide
Storage	Store as concentrated solution. Centrifuge briefly prior to opening vial. Store at 4°C. DO NOT FREEZE.
Concentration	0.5 mg/ml (Please refer to the vial label for the specific concentration.)
Immunogen	Full length GST isolated from <i>Schistosoma japonicum</i> .
Purification	Purified by antigen-affinity chromatography From serum
Conjugation	Alkaline Phosphatase (AP)

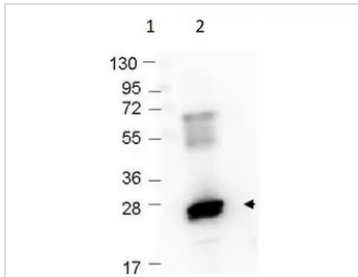


For full product information, images and publications, please visit our [website](#).

For laboratory research use only. Not for any clinical, therapeutic, or diagnostic use in humans or animals. Not for animal or human consumption.

Note
Purchasers shall not, and agree not to enable third parties to, analyze, copy, reverse engineer or otherwise attempt to determine the structure or sequence of the product.

DATA IMAGES

**GTX04517 WB Image**

WB analysis of recombinant GST protein using GTX04517 GST tag antibody (AP).

Lane 1 : protein marker

Lane 2 : Primary antibody

Dilution :1:1000

Loading : 0.25 μ g



For full product information, images and publications, please visit our [website](#).