

MCD antibody

Cat. No. GTX04518

Host	Rabbit
Clonality	Polyclonal
Isotype	IgG
Applications	WB, ICC/IF, IHC-P
Reactivity	Human, Rat

Package
100 µl

Applications

Application Note

*Optimal dilutions/concentrations should be determined by the researcher.

Suggested dilution	Recommended dilution
WB	1:500-1:2000
ICC/IF	1:100-1:500
IHC-P	1:50-1:200

Not tested in other applications.

Calculated MW 55 kDa. ([Note](#))

Properties

Form	Liquid
Buffer	PBS, 150mM NaCl, 50% Glycerol
Preservative	0.02% Sodium azide
Storage	Store as concentrated solution. Centrifuge briefly prior to opening vial. For short-term storage (1-2 weeks), store at 4°C. For long-term storage, aliquot and store at -20°C or below. Avoid multiple freeze-thaw cycles.
Concentration	1 mg/ml (Please refer to the vial label for the specific concentration.)
Immunogen	A synthesized peptide derived from human MLYCD(Accession O95822), corresponding to amino acid residues L307-D357.
Purification	Purified by antigen-affinity chromatography From serum
Conjugation	Unconjugated

Note

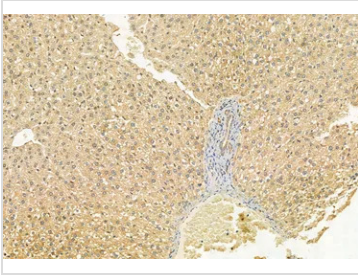
For laboratory research use only. Not for any clinical, therapeutic, or diagnostic use in humans or animals. Not for animal or human consumption.

Purchasers shall not, and agree not to enable third parties to, analyze, copy, reverse engineer or otherwise attempt to determine the structure or sequence of the product.



For full product information, images and publications, please visit our [website](#).

DATA IMAGES

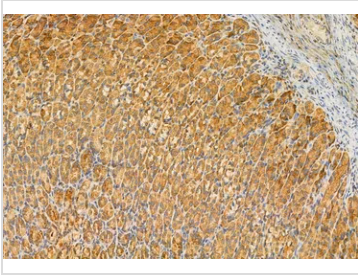


GTx04518 IHC-P Image

IHC-P analysis of rat liver tissue using GTx04518 MCD antibody.

Antigen retrieval : Heat mediated citrate buffer

Dilution : 1:100

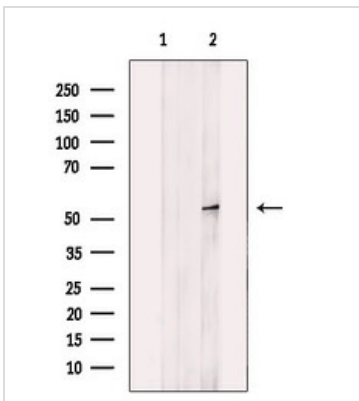


GTx04518 IHC-P Image

IHC-P analysis of rat stomach tissue using GTx04518 MCD antibody.

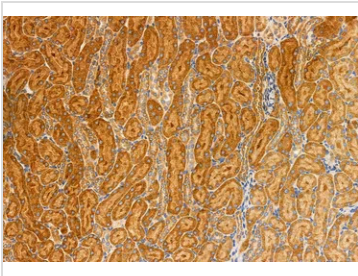
Antigen retrieval : Heat mediated citrate buffer

Dilution : 1:100



GTx04518 WB Image

WB analysis of human testis tissue lysate using GTx04518 MCD antibody. The lane on the left was treated with blocking peptide.



GTx04518 IHC-P Image

IHC-P analysis of rat kidney tissue using GTx04518 MCD antibody.

Antigen retrieval : Heat mediated citrate buffer

Dilution : 1:100



For full product information, images and publications, please visit our [website](#).