

KLF10 antibody

Cat. No. GTX04519

Host	Rabbit
Clonality	Polyclonal
Isotype	IgG
Applications	WB, ICC/IF, ELISA
Reactivity	Human

Package
100 µg

Applications

Application Note

*Optimal dilutions/concentrations should be determined by the researcher.

Suggested dilution	Recommended dilution
WB	0.25-0.5 µg/mL
ICC/IF	5 µg/mL
ELISA	0.1-0.5 µg/mL

Not tested in other applications.

Calculated MW 53 kDa. ([Note](#))

Properties

Form	Liquid
Buffer	4mg Trehalose, 0.9mg NaCl, 0.2mg Na ₂ HPO ₄
Preservative	No preservatives
Storage	Store as concentrated solution. Centrifuge briefly prior to opening vial. For short-term storage (1-2 weeks), store at 4°C. For long-term storage, aliquot and store at -20°C or below. Avoid multiple freeze-thaw cycles.
Concentration	0.5 mg/ml (Please refer to the vial label for the specific concentration.)
Immunogen	E.coli-derived human KLF10 recombinant protein (Position: K36-A471).
Purification	Purified by antigen-affinity chromatography
Conjugation	Unconjugated

Note

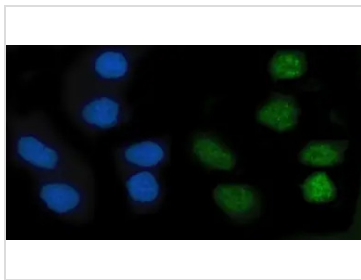
For laboratory research use only. Not for any clinical, therapeutic, or diagnostic use in humans or animals. Not for animal or human consumption.

Purchasers shall not, and agree not to enable third parties to, analyze, copy, reverse engineer or otherwise attempt to determine the structure or sequence of the product.



For full product information, images and publications, please visit our [website](#).

DATA IMAGES



GTX04519 ICC/IF Image

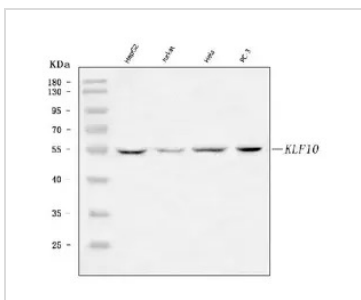
ICC/IF analysis of SiHa cells using GTX04519 KLF10 antibody.

Green : Primary antibody

Blue : DAPI

Antigen retrieval : Enzyme antigen retrieval was performed.

Dilution : 5 µg/mL



GTX04519 WB Image

WB analysis of various cell lysates using GTX04519 KLF10 antibody.

Loading : 30 µg

Dilution : 0.5 µg/mL



For full product information, images and publications, please visit our [website](https://www.genetex.com).