

## Dopamine Transporter antibody

Cat. No. GTX04526

<b>Host</b>	Rabbit
<b>Clonality</b>	Polyclonal
<b>Isotype</b>	IgG
<b>Applications</b>	WB, ICC/IF, IHC-P, IHC-Fr, FCM
<b>Reactivity</b>	Mouse, Rat, Mink

Package  
100 µl

## Applications

## Application Note

\*Optimal dilutions/concentrations should be determined by the researcher.

Suggested dilution	Recommended dilution
WB	1:300-1:5000
ICC/IF	1:50-1:200
IHC-P	1:200-1:400
IHC-Fr	1:100-1:500
FCM	1:20-1:100

Not tested in other applications.

**Calculated MW** 68 kDa. ( [Note](#) )

## Properties

<b>Form</b>	Liquid
<b>Buffer</b>	10mM TBS, 1% BSA, 50% Glycerol
<b>Preservative</b>	0.03% Proclin300
<b>Storage</b>	Store as concentrated solution. Centrifuge briefly prior to opening vial. For short-term storage (1-2 weeks), store at 4°C. For long-term storage, aliquot and store at -20°C or below. Avoid multiple freeze-thaw cycles.
<b>Concentration</b>	1 mg/ml (Please refer to the vial label for the specific concentration.)
<b>Immunogen</b>	KLH conjugated synthetic peptide derived from human DAT1 (aa 579-620)
<b>Purification</b>	Protein A purified
<b>Conjugation</b>	Unconjugated



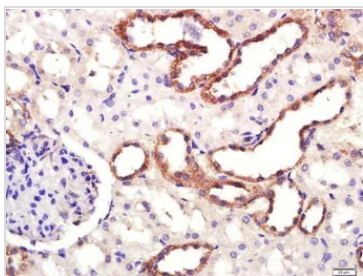
For full product information, images and publications, please visit our [website](#).

For laboratory research use only. Not for any clinical, therapeutic, or diagnostic use in humans or animals. Not for animal or human consumption.

**Note**

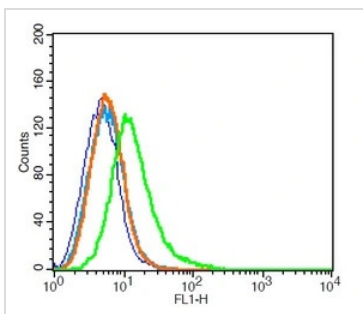
Purchasers shall not, and agree not to enable third parties to, analyze, copy, reverse engineer or otherwise attempt to determine the structure or sequence of the product.

DATA IMAGES



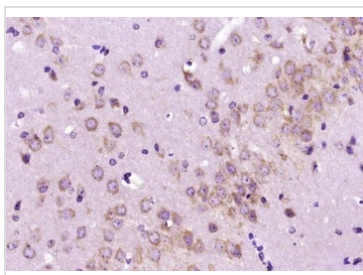
**GTX04526 IHC-P Image**

IHC-P analysis rat kidney tissue using GTX04526 Dopamine transporter antibody.  
 Antigen retrieval : Heat mediated sodium citrate buffer (pH 6.0) for 15min  
 Dilution : 1:400



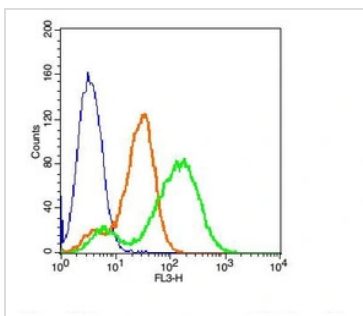
**GTX04526 FCM Image**

FACS analysis of RSC96 cells using GTX04526 Dopamine transporter antibody.  
 Green : Primary antibody  
 Blue : Control cells  
 Light blue : Secondary antibody only  
 Orange : Isotype control  
 Dilution : 6 µg



**GTX04526 IHC-P Image**

IHC-P analysis of mouse brain tissue using GTX04526 Dopamine transporter antibody.  
 Antigen retrieval : Heat mediated sodium citrate buffer (pH 6.0) for 15min  
 Dilution : 1:400



**GTX04526 FCM Image**

FACS analysis of RSC96 cells using GTX04526 Dopamine transporter antibody.  
 Green : Primary antibody  
 Orange : Isotype control  
 Blue : Non-stained cells  
 Dilution : 1:33



For full product information, images and publications, please visit our [website](#).