

Dopamine Transporter antibody

Cat. No. GTX04527

Host	Rabbit
Clonality	Polyclonal
Isotype	IgG
Applications	WB, ICC/IF, FCM
Reactivity	Mouse, Rat

Package
50 µl

Applications

Application Note

*Optimal dilutions/concentrations should be determined by the researcher.

Suggested dilution	Recommended dilution
WB	Assay dependent
ICC/IF	Assay dependent
FCM	Assay dependent

Not tested in other applications.

Calculated MW 69 kDa. ([Note](#))

Properties

Form	Liquid
Buffer	PBS, 1% BSA
Preservative	0.05% Sodium Azide
Storage	Store as concentrated solution. Centrifuge briefly prior to opening vial. For short-term storage (1-2 weeks), store at 4°C. For long-term storage, aliquot and store at -20°C or below. Avoid multiple freeze-thaw cycles.
Concentration	0.8 mg/ml (Please refer to the vial label for the specific concentration.)
Immunogen	Peptide (C)DAHASNSSDGLGLND, corresponding to amino acids residues 191-205 of rat DAT (Accession P23977) 2nd extracellular loop.
Purification	Purified by antigen-affinity chromatography
Conjugation	Unconjugated

Note

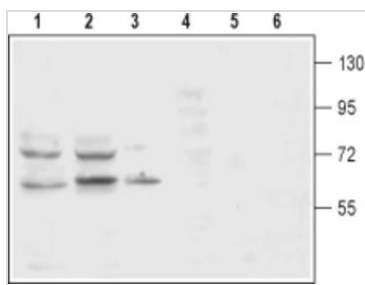
For laboratory research use only. Not for any clinical, therapeutic, or diagnostic use in humans or animals. Not for animal or human consumption.

Purchasers shall not, and agree not to enable third parties to, analyze, copy, reverse engineer or otherwise attempt to determine the structure or sequence of the product.



For full product information, images and publications, please visit our [website](#).

DATA IMAGES



GTX04527 WB Image

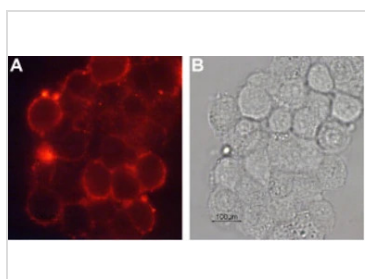
WB analysis of various lysates using GTX04527 Dopamine Tranporter antibody prior incubated with (Lane 4-6) or without (Lane 1-3) blocking peptide.

Lane 1 and 4 : Rat brain membrane tissue lysate

Lane 2 and 5 : Mouse brain membrane tissue lysate

Lane 3 and 6 : PC-12 whole cell lysate

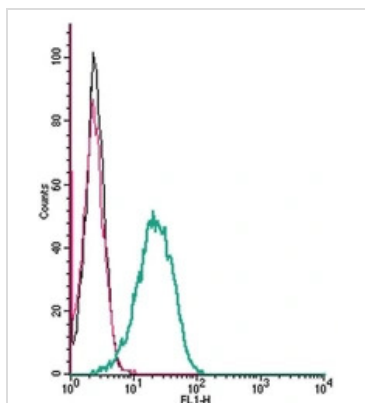
Dilution : 1:200



GTX04527 ICC/IF Image

ICC/IF analysis of PC-12 cells using GTX04527 Dopamine transporter antibody.

Dilution : 1:100



GTX04527 FCM Image

FACS analysis of J774 cells using GTX04527 Dopamine transporter antibody.

Green : Primary antibody

Red : Secondary antibody only

Black : Unlabeled cells

Dilution : 2.5 µg



For full product information, images and publications, please visit our [website](#).