

PAD4 antibody

Cat. No. GTX04531

Host	Rabbit
Clonality	Polyclonal
Isotype	IgG
Applications	WB, ICC/IF, IHC-P
Reactivity	Human, Mouse, Rat

Package
100 µl

Applications

Application Note

*Optimal dilutions/concentrations should be determined by the researcher.

Suggested dilution	Recommended dilution
WB	1:500-1:2000
ICC/IF	1:100-1:500
IHC-P	1:50-1:200

Not tested in other applications.

Calculated MW 74 kDa. ([Note](#))

Properties

Form	Liquid
Buffer	PBS, 150mM NaCl, 50% Glycerol
Preservative	0.02% Sodium Azide
Storage	Store as concentrated solution. Centrifuge briefly prior to opening vial. For short-term storage (1-2 weeks), store at 4°C. For long-term storage, aliquot and store at -20°C or below. Avoid multiple freeze-thaw cycles.
Concentration	1 mg/ml (Please refer to the vial label for the specific concentration.)
Immunogen	A synthesized peptide derived from human PADI4(Accession Q9UM07), corresponding to amino acid residues M1-A33.
Purification	Purified by antigen-affinity chromatography From serum
Conjugation	Unconjugated

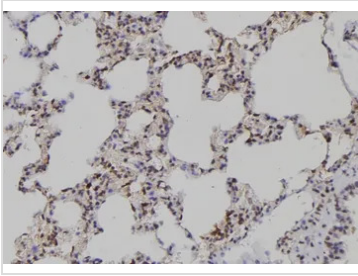
Note

For laboratory research use only. Not for any clinical, therapeutic, or diagnostic use in humans or animals. Not for animal or human consumption.

Purchasers shall not, and agree not to enable third parties to, analyze, copy, reverse engineer or otherwise attempt to determine the structure or sequence of the product.



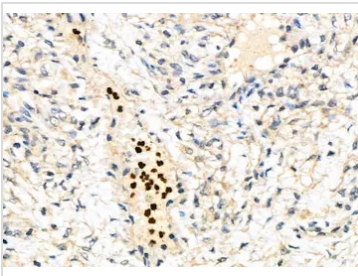
For full product information, images and publications, please visit our [website](#).

DATA IMAGES

GTX04531 IHC-P Image

IHC-P analysis of rat lung tissue using GTX04531 PAD4 antibody.

Antigen retrieval : Heat mediated sodium citrate buffer

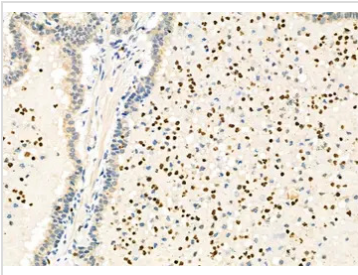
Dilution : 1:100


GTX04531 IHC-P Image

IHC-P analysis of human ovarian cancer using GTX04531 PAD4 antibody.

Antigen retrieval : Heat mediated sodium citrate buffer

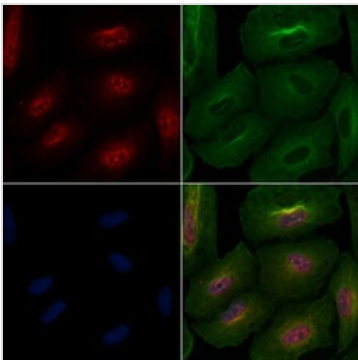
Dilution : 1:100


GTX04531 IHC-P Image

IHC-P analysis of human prostate cancer using GTX04531 PAD4 antibody.

Antigen retrieval : Heat mediated sodium citrate buffer

Dilution : 1:100


GTX04531 ICC/IF Image

ICC/IF analysis of PFA-fixed A549 cells using GTX04531 PAD4 antibody.

Red : Primary antibody

Green : Beta tubulin

Blue : DAPI

Permeabilization : 0.1% Triton X-100



For full product information, images and publications, please visit our [website](https://www.genetex.com).