

FAM38B antibody

Cat. No. GTX04536

| | |
|--------------|-------------------|
| Host | Rabbit |
| Clonality | Polyclonal |
| Isotype | IgG |
| Applications | WB, IHC-Fr |
| Reactivity | Human, Mouse, Rat |

Package

50 µl

Applications

Application Note

*Optimal dilutions/concentrations should be determined by the researcher.

| Suggested dilution | Recommended dilution |
|--------------------|----------------------|
| WB | Assay dependent |
| IHC-Fr | Assay dependent |

Not tested in other applications.

Calculated MW 318 kDa. ([Note](#))

Properties

| | |
|---------------|--|
| Form | Liquid |
| Buffer | PBS, 1% BSA |
| Preservative | 0.05% Sodium Azide |
| Storage | Store as concentrated solution. Centrifuge briefly prior to opening vial. For short-term storage (1-2 weeks), store at 4°C. For long-term storage, aliquot and store at -20°C or below. Avoid multiple freeze-thaw cycles. |
| Concentration | 0.8 mg/ml (Please refer to the vial label for the specific concentration.) |
| Immunogen | Peptide (C)RTIFHDITRLHLD, corresponding to amino acid residues 1092 - 1104 of human Piezo2 (Accession Q9H5I5). |
| Purification | Purified by antigen-affinity chromatography |
| Conjugation | Unconjugated |

Note

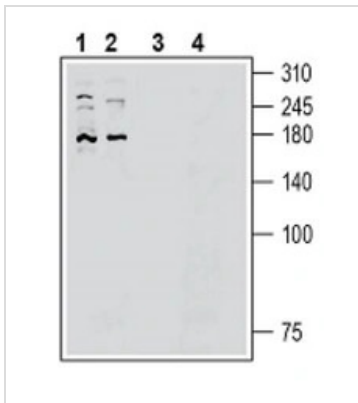
For laboratory research use only. Not for any clinical, therapeutic, or diagnostic use in humans or animals. Not for animal or human consumption.

Purchasers shall not, and agree not to enable third parties to, analyze, copy, reverse engineer or otherwise attempt to determine the structure or sequence of the product.



For full product information, images and publications, please visit our [website](#).

DATA IMAGES



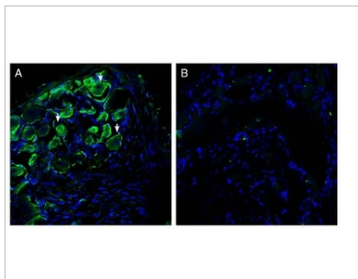
GTx04536 WB Image

WB analysis of various samples using GTx04536 FAM38B antibody prior incubated with (Lane 3-4) or without (Lane 1-2) blocking peptide.

Lane 1 and 3 : HepG2 whole cell lysate

Lane 2 and 4 : HUVEC whole cell lysate

Dilution : 1:200



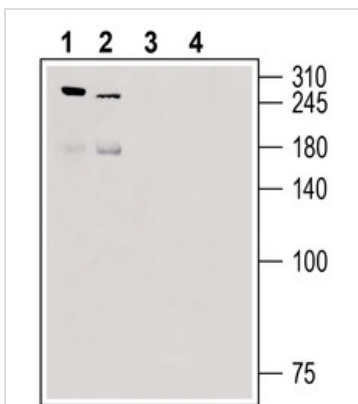
GTx04536 IHC-Fr Image

IHC-Fr analysis of rat dorsal root ganglion tissue using GTx04536 FAM38A antibody prior incubated with (Panel B) or without (Panel A) immunogen peptide. FAM38B immunoreactivity appeared in neuron profiles (arrows).

Green : Primary antibody

Blue : DAPI

Dilution : 1:200



GTx04536 WB Image

WB analysis of various tissue lysate using GTx04536 FAM38B antibody prior incubated with (Lane 3-4) or without (Lane 1-2) blocking peptide.

Lane 1 and 3 : Rat dorsal root ganglion tissue lysate

Lane 2 and 4 : Mouse lung tissue lysate

Dilution : 1:200



For full product information, images and publications, please visit our [website](https://www.genetex.com).