

# NFkB p65 (phospho Ser276) antibody

**Cat. No. GTX04541**

<b>Host</b>	Rabbit
<b>Clonality</b>	Polyclonal
<b>Isotype</b>	IgG
<b>Applications</b>	WB, ICC/IF, IHC-P, ELISA
<b>Reactivity</b>	Human, Mouse, Rat

**Package**  
100 µl

## Applications

### Application Note

\*Optimal dilutions/concentrations should be determined by the researcher.

Suggested dilution	Recommended dilution
WB	1:500-1:2000
ICC/IF	1:100-1:500
IHC-P	1:50-1:200
ELISA	Assay dependent

Not tested in other applications.

**Calculated MW** 60 kDa. ( [Note](#) )

## Properties

<b>Form</b>	Liquid
<b>Buffer</b>	PBS, 150mM NaCl, 50% Glycerol
<b>Preservative</b>	0.02% Sodium Azide
<b>Storage</b>	Store as concentrated solution. Centrifuge briefly prior to opening vial. For short-term storage (1-2 weeks), store at 4°C. For long-term storage, aliquot and store at -20°C or below. Avoid multiple freeze-thaw cycles.
<b>Concentration</b>	1 mg/ml (Please refer to the vial label for the specific concentration.)
<b>Immunogen</b>	A synthesized peptide derived from human RELA(Accession Q04206), corresponding to amino acid residues around phosphorylated Ser276.
<b>Purification</b>	Purified by affinity purification via sequential chromatography on phospho-peptide and non-phospho-peptide affinity columns. From serum
<b>Conjugation</b>	Unconjugated

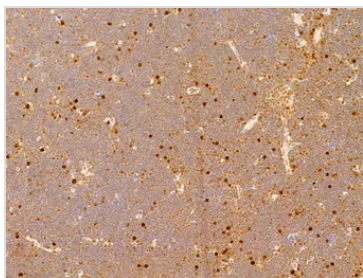


For full product information, images and publications, please visit our [website](#).

For laboratory research use only. Not for any clinical, therapeutic, or diagnostic use in humans or animals. Not for animal or human consumption.

**Note**

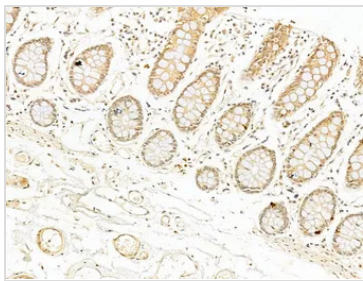
Purchasers shall not, and agree not to enable third parties to, analyze, copy, reverse engineer or otherwise attempt to determine the structure or sequence of the product.

**DATA IMAGES**

**GTX04541 IHC-P Image**

IHC-P analysis of rat thymus tissue using GTX04541 NFkB p65 (phospho Ser276) antibody.

Antigen retrieval : Heat mediated citrate buffer

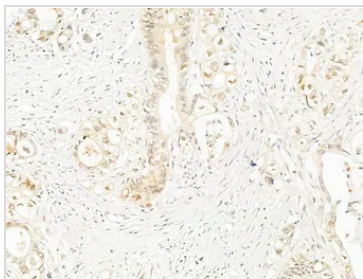
Dilution : 1:100


**GTX04541 IHC-P Image**

IHC-P analysis of human normal tissues adjacent to colorectal cancer tissue using GTX04541 NFkB p65 (phospho Ser276) antibody.

Antigen retrieval : Heat mediated citrate buffer

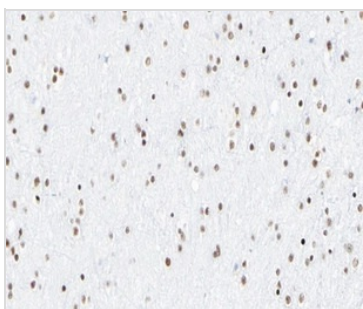
Dilution : 1:100


**GTX04541 IHC-P Image**

IHC-P analysis of human colorectal cancer tissue using GTX04541 NFkB p65 (phospho Ser276) antibody.

Antigen retrieval : Heat mediated citrate buffer

Dilution : 1:100


**GTX04541 IHC-P Image**

IHC-P analysis of human brain tissue using GTX04541 NFkB p65 (phospho Ser276) antibody.

Antigen retrieval : Heat mediated citrate buffer

Dilution : 1:200



For full product information, images and publications, please visit our [website](https://www.genetex.com).