

CYP7B1 antibody

Cat. No. GTX04543

| | |
|--------------|------------|
| Host | Rabbit |
| Clonality | Polyclonal |
| Isotype | IgG |
| Applications | WB, IHC-P |
| Reactivity | Human |

Package
100 µl

Applications

Application Note

*Optimal dilutions/concentrations should be determined by the researcher.

| Suggested dilution | Recommended dilution |
|--------------------|----------------------|
| WB | 1:500-1:1000 |
| IHC-P | 1:50-1:200 |

Not tested in other applications.

Calculated MW 58 kDa. ([Note](#))

Properties

| | |
|---------------|--|
| Form | Liquid |
| Buffer | PBS, 150mM NaCl, 50% Glycerol |
| Preservative | 0.02% Sodium Azide |
| Storage | Store as concentrated solution. Centrifuge briefly prior to opening vial. For short-term storage (1-2 weeks), store at 4°C. For long-term storage, aliquot and store at -20°C or below. Avoid multiple freeze-thaw cycles. |
| Concentration | 1 mg/ml (Please refer to the vial label for the specific concentration.) |
| Immunogen | A synthesized peptide derived from human CYP7B1(Accession O75881), corresponding to amino acid residues R310-L360. |
| Purification | Purified by affinity chromatography From serum |
| Conjugation | Unconjugated |

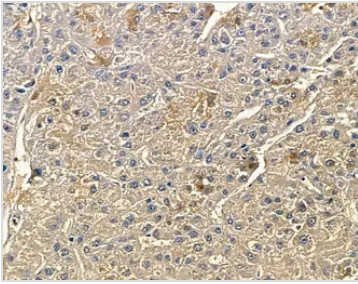
Note

For laboratory research use only. Not for any clinical, therapeutic, or diagnostic use in humans or animals. Not for animal or human consumption.

Purchasers shall not, and agree not to enable third parties to, analyze, copy, reverse engineer or otherwise attempt to determine the structure or sequence of the product.



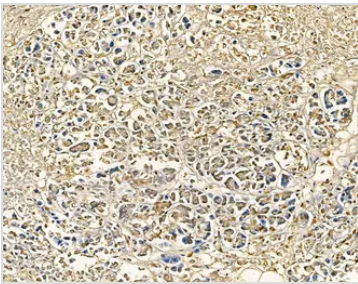
For full product information, images and publications, please visit our [website](#).

DATA IMAGES

GTx04543 IHC-P Image

IHC-P analysis of human mammary cancer and para-carcinoma tissue using GTx04543 CYP7B1 antibody.

Antigen retrieval : Heat mediated citrate buffer

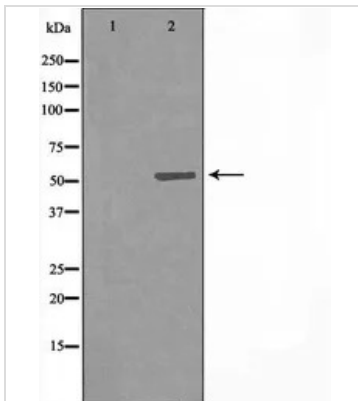
Dilution : 1:100


GTx04543 IHC-P Image

IHC-P analysis of human gastric cancer and para-carcinoma tissue using GTx04543 CYP7B1 antibody.

Antigen retrieval : Heat mediated citrate buffer

Dilution : 1:100


GTx04543 WB Image

WB analysis of LOVO whole cell lysates using GTx04543 CYP7B1 antibody. The lane on the left was treated with blocking peptide.



For full product information, images and publications, please visit our [website](https://www.genetex.com).