

IL1F8 antibody

Cat. No. GTX04549

Host	Rabbit
Clonality	Polyclonal
Isotype	IgG
Applications	WB, ICC/IF, IHC-P
Reactivity	Human, Mouse

Package
100 µl

Applications

Application Note

*Optimal dilutions/concentrations should be determined by the researcher.

Suggested dilution	Recommended dilution
WB	1:500-1:2000
ICC/IF	1:100-1:500
IHC-P	1:50-1:200

Not tested in other applications.

Calculated MW 19 kDa. ([Note](#))

Properties

Form	Liquid
Buffer	PBS, 150mM NaCl, 50% Glycerol
Preservative	0.02% Sodium Azide
Storage	Store as concentrated solution. Centrifuge briefly prior to opening vial. For short-term storage (1-2 weeks), store at 4°C. For long-term storage, aliquot and store at -20°C or below. Avoid multiple freeze-thaw cycles.
Concentration	1 mg/ml (Please refer to the vial label for the specific concentration.)
Immunogen	A synthesized peptide derived from human IL36B(Accession Q9NZH7), corresponding to amino acid residues W126-M164.
Purification	Purified by affinity chromatography From serum
Conjugation	Unconjugated

Note

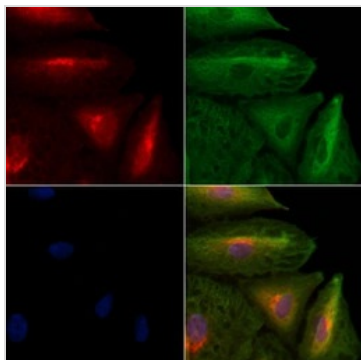
For laboratory research use only. Not for any clinical, therapeutic, or diagnostic use in humans or animals. Not for animal or human consumption.

Purchasers shall not, and agree not to enable third parties to, analyze, copy, reverse engineer or otherwise attempt to determine the structure or sequence of the product.



For full product information, images and publications, please visit our [website](#).

DATA IMAGES



GTX04549 ICC/IF Image

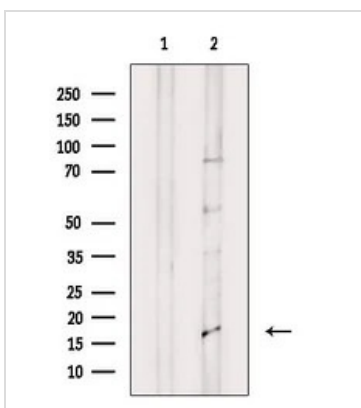
ICC/IF analysis of PFA fixed A549 cells using GTX04549 IL1F8 antibody.

Red : Primary antibody

Green : Beta tubulin

Blue : DAPI

Permeabilization : 0.1% Triton X-100



GTX04549 WB Image

WB analysis of HepG2 whole cell lysate with serum starvation treatment using GTX04549 IL1F8 antibody.

The lane on the left was treated with blocking peptide.



For full product information, images and publications, please visit our [website](#).