

Mouse Anti-Human lambda light chain antibody [1-155-2] (APC-Cy7)

Cat. No. GTX04554-15

Host	Mouse
Clonality	Monoclonal
Isotype	IgG1
Applications	FCM
Reactivity	Human

Package
100 test

Applications

Application Note

*Optimal dilutions/concentrations should be determined by the researcher.

Suggested dilution	Recommended dilution
FCM	4 μ L/10 ⁶ cells

Note : Do not need a permeabilization step.

Not tested in other applications.

Properties

Form	Liquid
Buffer	PBS
Preservative	15 mM sodium azide
Storage	Store as concentrated solution. Centrifuge briefly prior to opening vial. Store at 4°C. DO NOT FREEZE. Protect from light.
Concentration	Batch dependent
Immunogen	Human IgA1 lambda myeloma protein
Purification	Purified by size-exclusion chromatography
Conjugation	Allophycocyanin-Cyanine7 (APC-Cy7) Wavelength (Please refer to the vial label for the specific concentration.)

Note

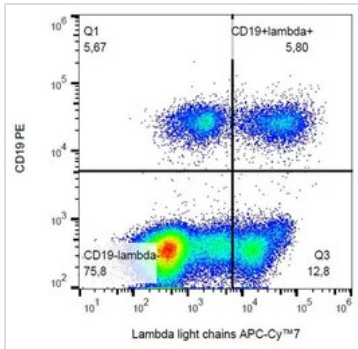
For laboratory research use only. Not for any clinical, therapeutic, or diagnostic use in humans or animals. Not for animal or human consumption.

Purchasers shall not, and agree not to enable third parties to, analyze, copy, reverse engineer or otherwise attempt to determine the structure or sequence of the product.



For full product information, images and publications, please visit our [website](#).

DATA IMAGES

**GTX04554-15 FCM Image**

FACS analysis of human peripheral blood using GTX04554-15 Mouse Anti-Human lambda light chain antibody [1-155-2] (APC-Cy7).



For full product information, images and publications, please visit our [website](#).