

## LGR5 antibody

Cat. No. GTX04555

Host	Rabbit
Clonality	Polyclonal
Isotype	IgG
Applications	WB, ICC/IF, IHC-P
Reactivity	Human, Mouse

Package  
100 µl

## Applications

## Application Note

\*Optimal dilutions/concentrations should be determined by the researcher.

Suggested dilution	Recommended dilution
WB	1:500-1:2000
ICC/IF	1:100-1:500
IHC-P	1:50-1:200

Not tested in other applications.

Calculated MW 100 kDa. ([Note](#))

## Properties

Form	Liquid
Buffer	PBS, 150mM NaCl, 50% Glycerol
Preservative	0.02% sodium azide
Storage	Store as concentrated solution. Centrifuge briefly prior to opening vial. For short-term storage (1-2 weeks), store at 4°C. For long-term storage, aliquot and store at -20°C or below. Avoid multiple freeze-thaw cycles.
Concentration	1 mg/ml (Please refer to the vial label for the specific concentration.)
Immunogen	A synthesized peptide derived from human LGR5(Accession O75473), corresponding to amino acid residues F672-T722.
Purification	Purified by antigen-affinity chromatography From serum
Conjugation	Unconjugated (Please refer to the vial label for the specific concentration.)

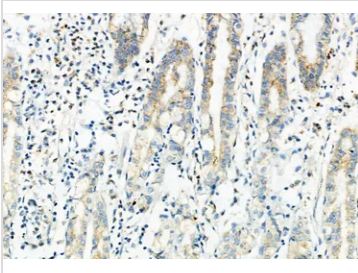


For full product information, images and publications, please visit our [website](#).

For laboratory research use only. Not for any clinical, therapeutic, or diagnostic use in humans or animals. Not for animal or human consumption.

**Note**

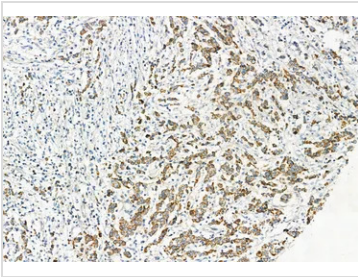
Purchasers shall not, and agree not to enable third parties to, analyze, copy, reverse engineer or otherwise attempt to determine the structure or sequence of the product.

**DATA IMAGES**

**GTX04555 IHC-P Image**

IHC-P analysis of human normal tissues adjacent to gastric cancer tissue using GTX04555 LGR5 antibody.

Antigen retrieval : Heat mediated citrate buffer

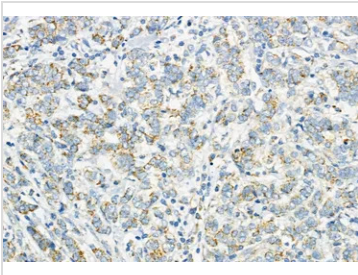
Dilution : 1:100


**GTX04555 IHC-P Image**

IHC-P analysis of human colorectal cancer tissue using GTX04555 LGR5 antibody.

Antigen retrieval : Heat mediated citrate buffer

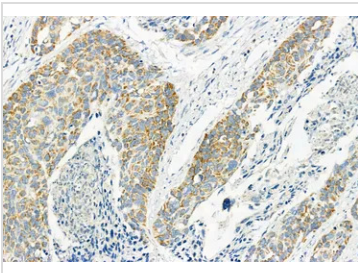
Dilution : 1:100


**GTX04555 IHC-P Image**

IHC-P analysis of human mammary cancer tissue using GTX04555 LGR5 antibody.

Antigen retrieval : Heat mediated citrate buffer

Dilution : 1:100


**GTX04555 IHC-P Image**

IHC-P analysis of human esophageal cancer tissue using GTX04555 LGR5 antibody.

Antigen retrieval : Heat mediated citrate buffer

Dilution : 1:100



For full product information, images and publications, please visit our [website](https://www.genetex.com).