

Adenosine A2a Receptor antibody [7F6-G5-A2]

Cat. No. GTX04561

Host	Mouse
Clonality	Monoclonal
Isotype	IgG2a
Applications	WB, ICC/IF, IHC-P, IHC-Fr, FCM, CyTOF
Reactivity	Human, Mouse, Rat, Rabbit, Sheep, Dog, Guinea pig, Pig

Package
100 µl

Applications

Application Note

*Optimal dilutions/concentrations should be determined by the researcher.

Suggested dilution	Recommended dilution
WB	Assay dependent
ICC/IF	Assay dependent
IHC-P	Assay dependent
IHC-Fr	Assay dependent
FCM	Assay dependent
CyTOF	Assay dependent

Not tested in other applications.

Calculated MW 45 kDa. ([Note](#))

Properties

Form	Liquid
Buffer	PBS
Preservative	0.02% sodium azide
Storage	Store as concentrated solution. Centrifuge briefly prior to opening vial. For short-term storage (1-2 weeks), store at 4°C. For long-term storage, aliquot and store at -20°C or below. Avoid multiple freeze-thaw cycles.
Concentration	1 mg/ml (Please refer to the vial label for the specific concentration.)
Immunogen	Full length recombinant human Adenosine A2a R(UniProt# P29274). Epitope mapped to SQPLPGER in the third intracellular loop (PMID 9822147).
Purification	Protein G purified
Conjugation	Unconjugated



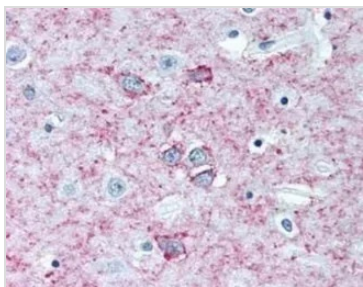
For full product information, images and publications, please visit our [website](#).

For laboratory research use only. Not for any clinical, therapeutic, or diagnostic use in humans or animals. Not for animal or human consumption.

Note

Purchasers shall not, and agree not to enable third parties to, analyze, copy, reverse engineer or otherwise attempt to determine the structure or sequence of the product.

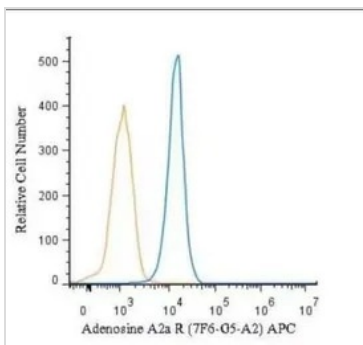
DATA IMAGES



GTX04561 IHC-P Image

IHC-P analysis of human brain (putamen) tissue using GTX04561 Adenosine A2a Receptor antibody [7F6-G5-A2].

Dilution : 5 µg/mL



GTX04561 FCM Image

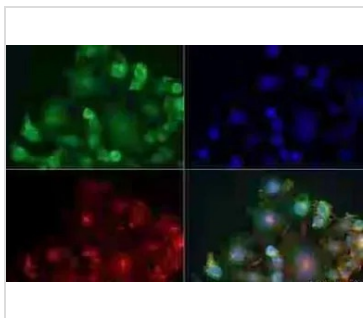
FACS analysis of 4% PFA fixed U-937 cells using GTX04561 Adenosine A2a Receptor antibody [7F6-G5-A2].

Blue : Primary antibody

Orange : Isotype control

Permeabilization : 0.1% saponin

Dilution : 1 µg/mL



GTX04561 ICC/IF Image

ICC/IF analysis of 4% PFA fixed Neuro2a cells using GTX04561 Adenosine A2a Receptor antibody [7F6-G5-A2].

Green : Primary antibody

Red : Actin

Blue : DAPI

Permeabilization : 0.5% Triton X-100

Dilution : 1:50



For full product information, images and publications, please visit our [website](#).