

Cytokeratin 20 antibody

Cat. No. GTX04562

Host	Rabbit
Clonality	Polyclonal
Isotype	IgG
Applications	WB, IHC-P
Reactivity	Human, Mouse

Package
100 µl

Applications

Application Note

*Optimal dilutions/concentrations should be determined by the researcher.

Suggested dilution	Recommended dilution
WB	Assay dependent
IHC-P	Assay dependent

Not tested in other applications.

Calculated MW 48 kDa. ([Note](#))

Properties

Form	Liquid
Buffer	PBS, 50% Glycerol
Preservative	0.02% sodium azide
Storage	Store as concentrated solution. Centrifuge briefly prior to opening vial. For short-term storage (1-2 weeks), store at 4°C. For long-term storage, aliquot and store at -20°C or below. Avoid multiple freeze-thaw cycles.
Concentration	Batch dependent (Please refer to the vial label for the specific concentration.)
Immunogen	Recombinant fusion protein containing a sequence corresponding to amino acids 245-424 of human Cytokeratin 20 (KRT20) (NP_061883.1).
Purification	Purified by affinity chromatography
Conjugation	Unconjugated

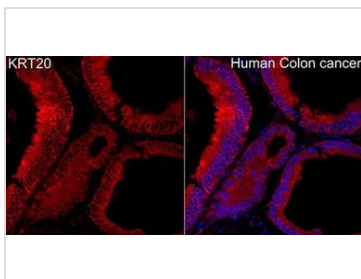
Note

For laboratory research use only. Not for any clinical, therapeutic, or diagnostic use in humans or animals. Not for animal or human consumption.

Purchasers shall not, and agree not to enable third parties to, analyze, copy, reverse engineer or otherwise attempt to determine the structure or sequence of the product.



For full product information, images and publications, please visit our [website](#).

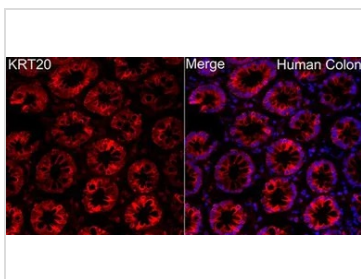
DATA IMAGES

GTx04562 IHC-P Image

IHC-P analysis of human colon carcinoma tissue using GTx04562 Cytokeratin 20 antibody.

Orange : Primary antibody

Blue : DAPI

Dilution : 1:100

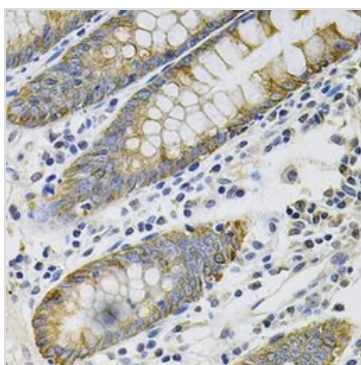

GTx04562 IHC-P Image

IHC-P analysis of human colon tissue using GTx04562 Cytokeratin 20 antibody.

Orange : Primary antibody

Blue : DAPI

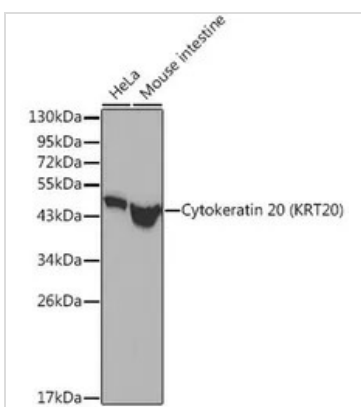
Dilution : 1:100


GTx04562 IHC-P Image

IHC-P analysis of human colon tissue using GTx04562 Cytokeratin 20 antibody.

Antigen retrieval : Heat mediated with 10 mM PBS buffer pH 7.2

Dilution : 1:100


GTx04562 WB Image

WB analysis of various samples using GTx04562 Cytokeratin 20 antibody.

Lane 1 : HeLa whole cell lysate

Lane 2 : mouse intestine tissue lysate

Loading : 25µg



For full product information, images and publications, please visit our [website](https://www.genetex.com).