

Klotho antibody

Cat. No. GTX04569

| | |
|---------------------|------------|
| Host | Rabbit |
| Clonality | Polyclonal |
| Isotype | IgG |
| Applications | WB, FCM |
| Reactivity | Human |

Package
400 µl

Applications

Application Note

*Optimal dilutions/concentrations should be determined by the researcher.

| Suggested dilution | Recommended dilution |
|--------------------|----------------------|
| WB | Assay dependent |
| FCM | Assay dependent |

Not tested in other applications.

Calculated MW 116 kDa. ([Note](#))

Properties

| | |
|----------------------|--|
| Form | Liquid |
| Buffer | PBS |
| Preservative | 0.09% Sodium Azide |
| Storage | Store as concentrated solution. Centrifuge briefly prior to opening vial. For short-term storage (1-2 weeks), store at 4°C. For long-term storage, aliquot and store at -20°C or below. Avoid multiple freeze-thaw cycles. |
| Concentration | Batch dependent (Please refer to the vial label for the specific concentration.) |
| Immunogen | KLH conjugated synthetic peptide between 986-1012 amino acids from the C-terminal region of human Klotho |
| Purification | Protein A purified followed by peptide affinity purification |
| Conjugation | Unconjugated |

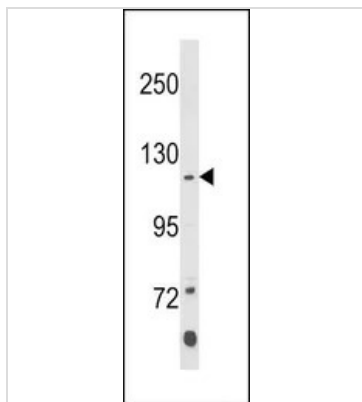
Note

For laboratory research use only. Not for any clinical, therapeutic, or diagnostic use in humans or animals. Not for animal or human consumption.

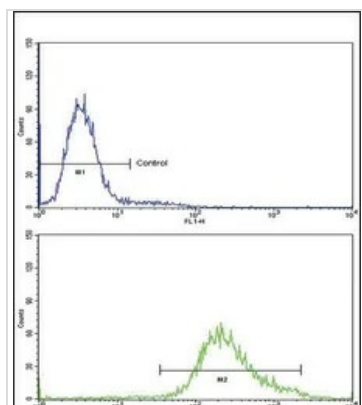
Purchasers shall not, and agree not to enable third parties to, analyze, copy, reverse engineer or otherwise attempt to determine the structure or sequence of the product.



For full product information, images and publications, please visit our [website](#).

DATA IMAGES

GTX04569 WB Image

WB analysis of K562 whole cell lysate using GTX04569 Klotho antibody.
Loading : 35 μ g


GTX04569 FCM Image

FACS analysis of K562 cells using GTX04569 Klotho antibody.
Bottom histogram : Primary antibody
Top histogram : Negative control cell (Blank)



For full product information, images and publications, please visit our [website](https://www.genetex.com).