

## MMP9 antibody

Cat. No. GTX04573

Host	Rabbit
Clonality	Polyclonal
Isotype	IgG
Applications	WB, ICC/IF, IHC-P
Reactivity	Human, Mouse, Rat

Package  
100 µl

## Applications

## Application Note

\*Optimal dilutions/concentrations should be determined by the researcher.

Suggested dilution	Recommended dilution
WB	Assay dependent
ICC/IF	Assay dependent
IHC-P	Assay dependent

Not tested in other applications.

Calculated MW 78 kDa. ( [Note](#) )

## Properties

Form	Liquid
Buffer	PBS, 150mM NaCl, 50% Glycerol
Preservative	0.02% sodium azide
Storage	Store as concentrated solution. Centrifuge briefly prior to opening vial. For short-term storage (1-2 weeks), store at 4°C. For long-term storage, aliquot and store at -20°C or below. Avoid multiple freeze-thaw cycles.
Concentration	1 mg/ml (Please refer to the vial label for the specific concentration.)
Immunogen	A synthesized peptide derived from human MMP9(Accession P14780), corresponding to amino acid residues D660-D707.
Purification	Purified by antigen-affinity chromatography
Conjugation	Unconjugated

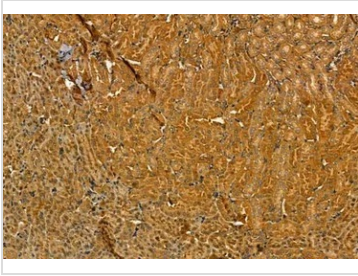
## Note

For laboratory research use only. Not for any clinical, therapeutic, or diagnostic use in humans or animals. Not for animal or human consumption.

Purchasers shall not, and agree not to enable third parties to, analyze, copy, reverse engineer or otherwise attempt to determine the structure or sequence of the product.



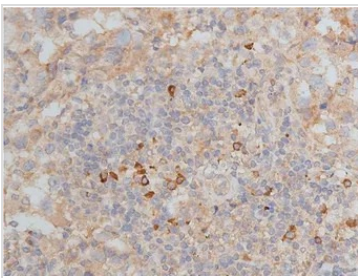
For full product information, images and publications, please visit our [website](#).

**DATA IMAGES**

**GTX04573 IHC-P Image**

IHC-P analysis of mouse kidney tissue using GTX04573 MMP9 antibody.

Antigen retrieval : Hear mediated citrate buffer

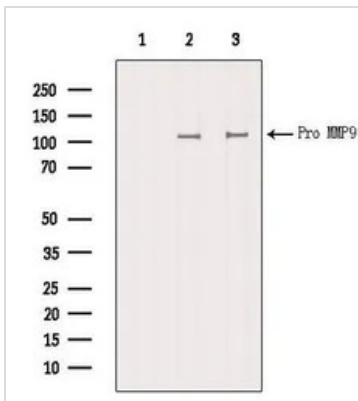
Dilution : 1:100


**GTX04573 IHC-P Image**

IHC-P analysis of human breast cancer tissue using GTX04573 MMP9 antibody.

Antigen retrieval : Hear mediated citrate buffer

Dilution : 1:50

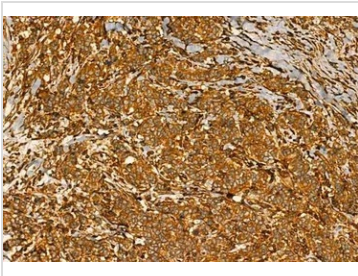

**GTX04573 WB Image**

WB analysis of various lysates using GTX04573 MMP9 antibody.

Lane 1 : B16F10 whole cell lysate with blocking peptide

Lane 2 : B16F10 whole cell lysate

Lane 3 : Mouse muscle tissue lysate


**GTX04573 IHC-P Image**

IHC-P analysis of human mammary cancer tissue using GTX04573 MMP9 antibody.

Antigen retrieval : Hear mediated citrate buffer

Dilution : 1:100



For full product information, images and publications, please visit our [website](https://www.genetex.com).