

Claudin 18.2 antibody [ARC5062-02]

Cat. No. GTX04575

Host	Rabbit
Clonality	Monoclonal
Isotype	IgG
Applications	IHC-P
Reactivity	Human

Package
100 µl

Applications

Application Note

*Optimal dilutions/concentrations should be determined by the researcher.

Suggested dilution	Recommended dilution
IHC-P	1:500-1:1000

Not tested in other applications.

Properties

Form	Liquid
Buffer	PBS, 0.05% BSA, 50% Glycerol
Preservative	0.05% proclin300
Storage	Store as concentrated solution. Centrifuge briefly prior to opening vial. For short-term storage (1-2 weeks), store at 4°C. For long-term storage, aliquot and store at -20°C or below. Avoid multiple freeze-thaw cycles.
Concentration	Batch dependent (Please refer to the vial label for the specific concentration.)
Immunogen	A synthetic peptide corresponding to a sequence within amino acids 1-100 of human CLDN18.2 (P56856-2).
Purification	Purified by affinity chromatography
Conjugation	Unconjugated

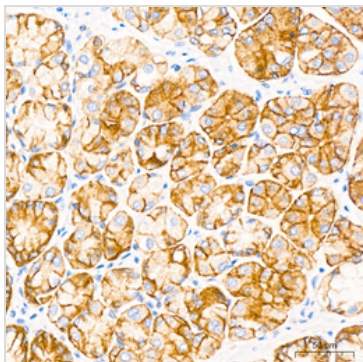
Note

For laboratory research use only. Not for any clinical, therapeutic, or diagnostic use in humans or animals. Not for animal or human consumption.

Purchasers shall not, and agree not to enable third parties to, analyze, copy, reverse engineer or otherwise attempt to determine the structure or sequence of the product.



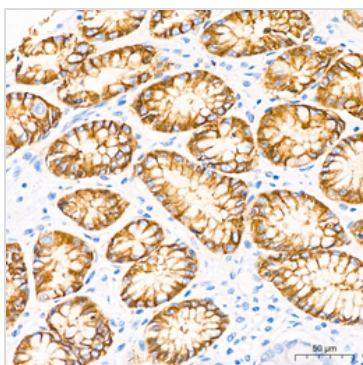
For full product information, images and publications, please visit our [website](#).

DATA IMAGES

GTx04575 IHC-P Image

IHC-P analysis of human stomach tissue using GTx04575 Claudin 18.2 antibody [ARC5062-02].

Antigen retrieval : 10 mM Tris/EDTA buffer, pH 9.0

Dilution : 1:50


GTx04575 IHC-P Image

IHC-P analysis of human stomach tissue using GTx04575 Claudin 18.2 antibody [ARC5062-02].

Antigen retrieval : 10 mM Tris/EDTA buffer, pH 9.0

Dilution : 1:50



For full product information, images and publications, please visit our [website](#).