

## TMEM26 antibody

Cat. No. GTX04582

<b>Host</b>	Rabbit
<b>Clonality</b>	Polyclonal
<b>Isotype</b>	IgG
<b>Applications</b>	WB, IHC-P
<b>Reactivity</b>	Human

Package  
100 µl

## Applications

## Application Note

\*Optimal dilutions/concentrations should be determined by the researcher.

Suggested dilution	Recommended dilution
WB	Assay dependent
IHC-P	Assay dependent

Not tested in other applications.

**Calculated MW** 42 kDa. ( [Note](#) )

## Properties

<b>Form</b>	Liquid
<b>Buffer</b>	PBS, 2% sucrose
<b>Preservative</b>	0.09% sodium azide
<b>Storage</b>	Store as concentrated solution. Centrifuge briefly prior to opening vial. For short-term storage (1-2 weeks), store at 4°C. For long-term storage, aliquot and store at -20°C or below. Avoid multiple freeze-thaw cycles.
<b>Concentration</b>	0.5 mg/ml (Please refer to the vial label for the specific concentration.)
<b>Immunogen</b>	A synthetic peptide directed towards the C-terminal region of Human TMEM26 (RSQSEGLKGEHGCRAQTSESGPSQRDWQNESKEGLAIPRGSPVTSDDSH)
<b>Purification</b>	Purified by affinity chromatography
<b>Conjugation</b>	Unconjugated

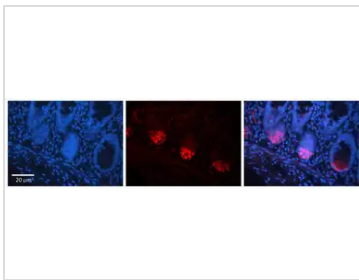
## Note

For laboratory research use only. Not for any clinical, therapeutic, or diagnostic use in humans or animals. Not for animal or human consumption.

Purchasers shall not, and agree not to enable third parties to, analyze, copy, reverse engineer or otherwise attempt to determine the structure or sequence of the product.



For full product information, images and publications, please visit our [website](#).

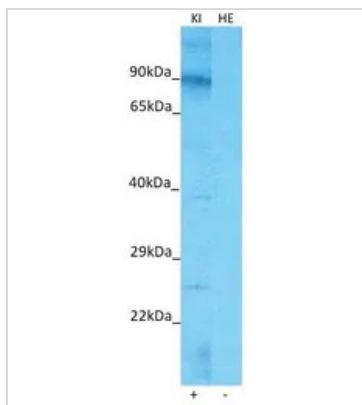
**DATA IMAGES**

**GTX04582 IHC-P Image**

IHC-P analysis of human colon tissue using GTX04582 TMEM26 antibody.

Red : Primary antibody

Blue : Nucleus

Dilution : 1:100


**GTX04582 WB Image**

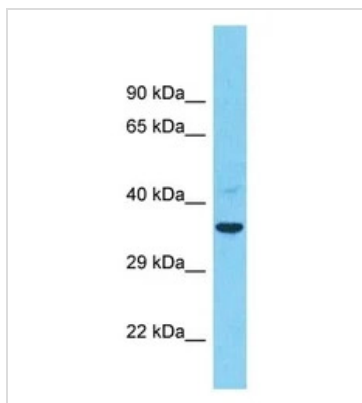
WB analysis of various samples using GTX04582 TMEM26 antibody.

KI : Human Kidney tissue lysate, a Positive control

HE : Human Fetal Heart tissue lysate, a Negative control

Loading : 25 µg

Dilution : 1 µg/mL


**GTX04582 WB Image**

WB analysis of COLO205 whole cell lysate using GTX04582 TMEM26 antibody.

Dilution : 1 µg/mL



For full product information, images and publications, please visit our [website](https://www.genetex.com).