

## CDC42 antibody

**Cat. No. GTX04584**

<b>Host</b>	Rabbit
<b>Clonality</b>	Polyclonal
<b>Isotype</b>	IgG
<b>Applications</b>	WB, IHC-P, FCM, ELISA
<b>Reactivity</b>	Human, Mouse, Rat

**Package**  
100 µg

## Applications

**Application Note**

\*Optimal dilutions/concentrations should be determined by the researcher.

Suggested dilution	Recommended dilution
WB	0.1-0.5 µg/mL
IHC-P	0.5-1 µg/mL
FCM	1-3 µg/10 <sup>6</sup> cells
ELISA	0.1-0.5 µg/mL

**Note : By heat**

Not tested in other applications.

**Calculated MW** 21 kDa. ([Note](#))

## Properties

<b>Form</b>	Liquid
<b>Buffer</b>	4mg Trehalose, 0.9mg NaCl, 0.2mg Na <sub>2</sub> HPO <sub>4</sub>
<b>Preservative</b>	0.05 mg sodium azide
<b>Storage</b>	Store as concentrated solution. Centrifuge briefly prior to opening vial. For short-term storage (1-2 weeks), store at 4°C. For long-term storage, aliquot and store at -20°C or below. Avoid multiple freeze-thaw cycles.
<b>Concentration</b>	0.5 mg/ml (Please refer to the vial label for the specific concentration.)
<b>Immunogen</b>	E.coli-derived human CDC42 recombinant protein (Position: K16-C188).
<b>Purification</b>	Purified by antigen-affinity chromatography
<b>Conjugation</b>	Unconjugated



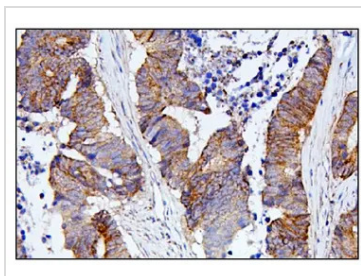
For full product information, images and publications, please visit our [website](#).

For laboratory research use only. Not for any clinical, therapeutic, or diagnostic use in humans or animals. Not for animal or human consumption.

**Note**

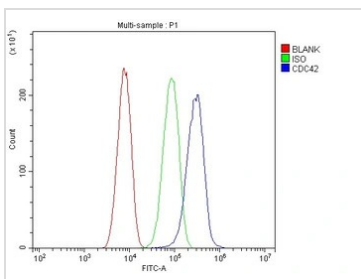
Purchasers shall not, and agree not to enable third parties to, analyze, copy, reverse engineer or otherwise attempt to determine the structure or sequence of the product.

DATA IMAGES



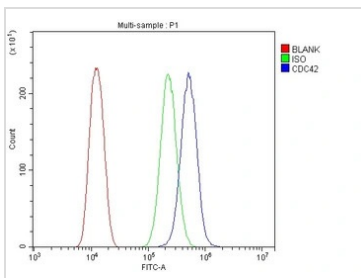
**GTX04584 IHC-P Image**

IHC-P analysis of human colon cancer tissue using GTX04584 CDC42 antibody.  
 Antigen retrieval : Heat mediated EDTA buffer (pH 8.0)  
 Dilution : 1 µg/mL



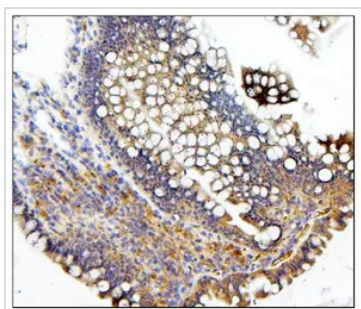
**GTX04584 FCM Image**

FACS analysis of SiHa cells using GTX04584 CDC42 antibody.  
 Blue : Primary antibody  
 Green : Isotype control  
 Red : Unlabelled sample  
 Dilution : 1 µg/10<sup>6</sup> cells



**GTX04584 FCM Image**

FACS analysis of U2OS cells using GTX04584 CDC42 antibody.  
 Blue : Primary antibody  
 Green : Isotype control  
 Red : Unlabelled sample  
 Dilution : 1 µg/10<sup>6</sup> cells



**GTX04584 IHC-P Image**

IHC-P analysis of rat intestine tissue using GTX04584 CDC42 antibody.  
 Antigen retrieval : Heat mediated EDTA buffer (pH 8.0)  
 Dilution : 1 µg/mL



For full product information, images and publications, please visit our [website](#).