

# GCR2 antibody

**Cat. No. GTX04585**

<b>Host</b>	Rabbit
<b>Clonality</b>	Polyclonal
<b>Isotype</b>	IgG
<b>Applications</b>	WB, ICC/IF, FCM, ELISA
<b>Reactivity</b>	Human

**Package**  
100 µg

## Applications

### Application Note

\*Optimal dilutions/concentrations should be determined by the researcher.

Suggested dilution	Recommended dilution
WB	0.25-0.5 µg/mL
ICC/IF	5 µg/mL
FCM	1-3 µg/10 <sup>6</sup> cells
ELISA	0.1-0.5 µg/mL

Not tested in other applications.

**Calculated MW** 73 kDa. ( [Note](#) )

## Properties

<b>Form</b>	Liquid
<b>Buffer</b>	4mg Trehalose, 0.9mg NaCl, 0.2mg Na <sub>2</sub> HPO <sub>4</sub>
<b>Preservative</b>	No preservatives
<b>Storage</b>	Store as concentrated solution. Centrifuge briefly prior to opening vial. For short-term storage (1-2 weeks), store at 4°C. For long-term storage, aliquot and store at -20°C or below. Avoid multiple freeze-thaw cycles.
<b>Concentration</b>	0.5 mg/ml (Please refer to the vial label for the specific concentration.)
<b>Immunogen</b>	E.coli-derived human SGT1/ECD recombinant protein (Position: L50-Q567).
<b>Purification</b>	Purified by antigen-affinity chromatography
<b>Conjugation</b>	Unconjugated

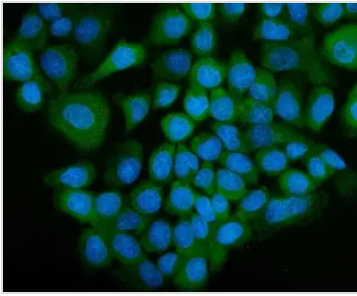
### Note

For laboratory research use only. Not for any clinical, therapeutic, or diagnostic use in humans or animals. Not for animal or human consumption.

Purchasers shall not, and agree not to enable third parties to, analyze, copy, reverse engineer or otherwise attempt to determine the structure or sequence of the product.



For full product information, images and publications, please visit our [website](#).

**DATA IMAGES**

**GTX04585 ICC/IF Image**

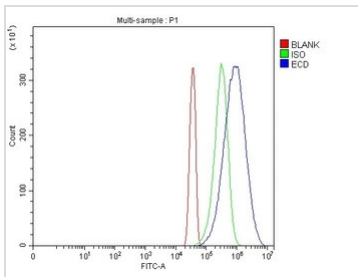
ICC/IF analysis of PFA fixed A431 cells using GTX04585 GCR2 antibody.

Antigen retrieval : Enzyme antigen retrieval was performed.

Green : Primary antibody

Blue : DAPI

Dilution : 5 µg/mL


**GTX04585 FCM Image**

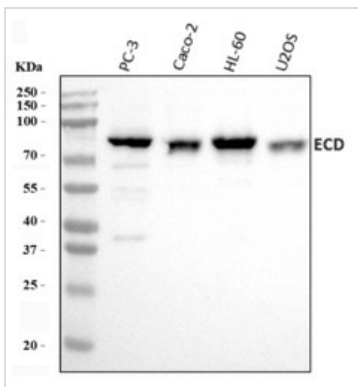
FACS analysis of HeLa cells using GTX04585 GCR2 antibody.

Blue : Primary antibody

Green : Isotype control

Red : Unlabelled sample

Dilution : 1 µg/10<sup>6</sup> cells


**GTX04585 WB Image**

WB analysis of various cell lysates using GTX04585 GCR2 antibody.

Loading : 30 µg

Dilution : 0.5 µg/mL



For full product information, images and publications, please visit our [website](#).