

GCN2 (phospho Thr899) antibody

Cat. No. GTX04587

Host	Rabbit
Clonality	Polyclonal
Isotype	IgG
Applications	WB, FCM
Reactivity	Human, Mouse

Package
100 µl

Applications

Application Note

*Optimal dilutions/concentrations should be determined by the researcher.

Suggested dilution	Recommended dilution
WB	1:300-1:5000
FCM	1:20-1:100

Note : Permeabilization : 0.1% PBST or 90% ice-cold methanol

Not tested in other applications.

Calculated MW 187 kDa. ([Note](#))**Product Note** This phosphorylation site is homologous to Thr898 in Mouse and Thr899 in Rat.

Properties

Form	Liquid
Buffer	10mM TBS, 1% BSA, 50% Glycerol
Preservative	0.03% Proclin300
Storage	Store as concentrated solution. Centrifuge briefly prior to opening vial. For short-term storage (1-2 weeks), store at 4°C. For long-term storage, aliquot and store at -20°C or below. Avoid multiple freeze-thaw cycles.
Concentration	1 mg/ml (Please refer to the vial label for the specific concentration.)
Immunogen	KLH conjugated synthetic phosphopeptide derived from human GCN2 around the phosphorylation site of Thr899.
Purification	Protein A purified
Conjugation	Unconjugated



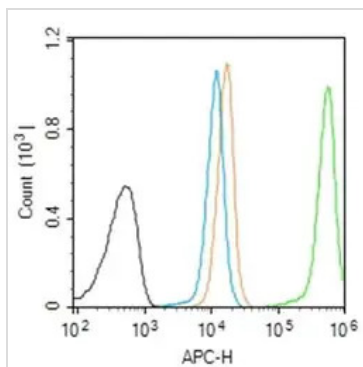
For full product information, images and publications, please visit our [website](#).

For laboratory research use only. Not for any clinical, therapeutic, or diagnostic use in humans or animals. Not for animal or human consumption.

Note

Purchasers shall not, and agree not to enable third parties to, analyze, copy, reverse engineer or otherwise attempt to determine the structure or sequence of the product.

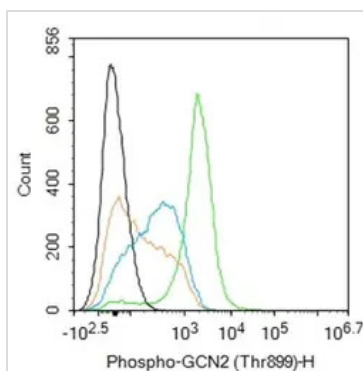
DATA IMAGES



GTX04587 FCM Image

FACS analysis of 4% PFA-fixed Molt-4 cells using GTX04587 GCN2 (phospho Thr899) antibody.

- Green : Primary antibody
- Orange : Isotype control
- Blue : Secondary antibody only
- Black : Unlabeled cells
- Permeabilization : 90% ice-cold methanol
- Dilution : 1:50



GTX04587 FCM Image

FACS analysis of 4% PFA-fixed mouse spleen cells using GTX04587 GCN2 (phospho Thr899) antibody.

- Green : Primary antibody
- Orange : Isotype control
- Blue : Secondary antibody only
- Black : Unlabeled cells
- Permeabilization : 0.1% PBST
- Dilution : 1:50



For full product information, images and publications, please visit our [website](#).