

GCN2 (phospho Thr899) antibody

Cat. No. GTX04588

Host	Rabbit
Clonality	Polyclonal
Isotype	IgG
Applications	WB, IHC-P, ELISA
Reactivity	Human, Mouse, Rat

Package
100 µl

Applications

Application Note

*Optimal dilutions/concentrations should be determined by the researcher.

Suggested dilution	Recommended dilution
WB	1:1000-1:3000
IHC-P	1:50-1:200
ELISA	Assay dependent

Not tested in other applications.

Calculated MW 187 kDa. ([Note](#))

Properties

Form	Liquid
Buffer	PBS, 150mM NaCl, 50% Glycerol
Preservative	0.02% sodium azide
Storage	Store as concentrated solution. Centrifuge briefly prior to opening vial. For short-term storage (1-2 weeks), store at 4°C. For long-term storage, aliquot and store at -20°C or below. Avoid multiple freeze-thaw cycles.
Concentration	1 mg/ml (Please refer to the vial label for the specific concentration.)
Immunogen	A synthesized peptide derived from human EIF2AK4(Accession Q9P2K8), corresponding to amino acid residues around phosphorylated Thr899.
Purification	Purified by affinity purification via sequential chromatography on phospho-peptide and non-phospho-peptide affinity columns. From serum
Conjugation	Unconjugated

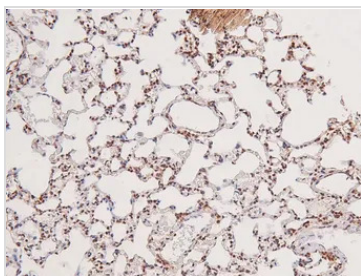


For full product information, images and publications, please visit our [website](#).

For laboratory research use only. Not for any clinical, therapeutic, or diagnostic use in humans or animals. Not for animal or human consumption.

Note

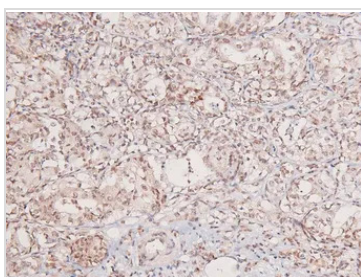
Purchasers shall not, and agree not to enable third parties to, analyze, copy, reverse engineer or otherwise attempt to determine the structure or sequence of the product.

DATA IMAGES

GTx04588 IHC-P Image

IHC-P analysis of rat lung tissue using GTx04588 GCN2 (phospho Thr899) antibody.

Antigen retrieval : Heat mediated citrate buffer

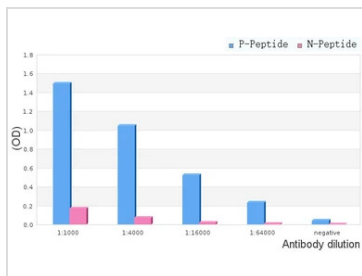
Dilution : 1:200


GTx04588 IHC-P Image

IHC-P analysis of human liver cancer tissue using GTx04588 GCN2 (phospho Thr899) antibody.

Antigen retrieval : Heat mediated citrate buffer

Dilution : 1:200

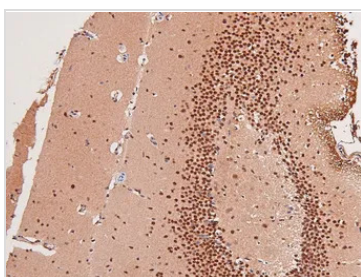

GTx04588 ELISA Image

ELISA analysis of phospho- and non phospho- immunogen peptide using serial diluted GTx04588 GCN2 (phospho Thr899) antibody.

P-peptide : phospho-peptide

N-peptide : non-phospho-peptide

Peptides concentration : 1 µg/mL


GTx04588 IHC-P Image

IHC-P analysis of mouse brain tissue using GTx04588 GCN2 (phospho Thr899) antibody.

Antigen retrieval : Heat mediated citrate buffer

Dilution : 1:200



For full product information, images and publications, please visit our [website](https://www.genetex.com).