

PKC beta 1 (phospho Ser661) antibody

Cat. No. GTX04593

Host	Rabbit
Clonality	Polyclonal
Isotype	IgG
Applications	WB, IHC-P, ELISA
Reactivity	Human, Mouse

Package
100 µl

Applications

Application Note

*Optimal dilutions/concentrations should be determined by the researcher.

Suggested dilution	Recommended dilution
WB	1:1000-1:3000
IHC-P	1:50-1:200
ELISA	Assay dependent

Not tested in other applications.

Calculated MW 77 kDa. ([Note](#))

Properties

Form	Liquid
Buffer	PBS, 150mM NaCl, 50% Glycerol
Preservative	0.02% sodium azide
Storage	Store as concentrated solution. Centrifuge briefly prior to opening vial. For short-term storage (1-2 weeks), store at 4°C. For long-term storage, aliquot and store at -20°C or below. Avoid multiple freeze-thaw cycles.
Concentration	1 mg/ml (Please refer to the vial label for the specific concentration.)
Immunogen	A synthesized peptide derived from human PRKCB(Accession P05771), corresponding to amino acid residues around phosphorylated Ser661.
Purification	Purified by affinity purification via sequential chromatography on phospho-peptide and non-phospho-peptide affinity columns. From serum
Conjugation	Unconjugated

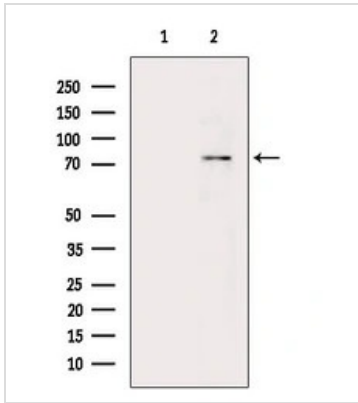
For full product information, images and publications, please visit our [website](#).

For laboratory research use only. Not for any clinical, therapeutic, or diagnostic use in humans or animals. Not for animal or human consumption.

Note

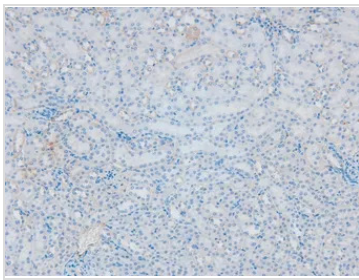
Purchasers shall not, and agree not to enable third parties to, analyze, copy, reverse engineer or otherwise attempt to determine the structure or sequence of the product.

DATA IMAGES



GTX04593 WB Image

WB analysis of mouse brain tissue lysate using GTX04593 PKC beta 1 (phospho Ser661) antibody. The lane on the left was treated with blocking peptide.

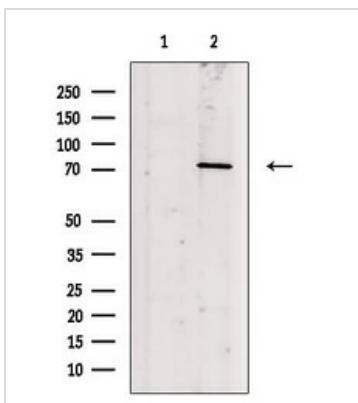


GTX04593 IHC-P Image

IHC-P analysis of mouse kidney tissue using GTX04593 PKC beta 1 (phospho Ser661) antibody.

Antigen retrieval : Heat mediated citrate buffer.

Dilution : 1:200



GTX04593 WB Image

WB analysis of P19 whole cell lysate with heat-shock treatment using GTX04593 PKC beta 1 (phospho Ser661) antibody. The lane on the left was treated with blocking peptide.



For full product information, images and publications, please visit our [website](https://www.genetex.com).