

YKL-39 antibody

Cat. No. GTX04608

Host	Rabbit
Clonality	Polyclonal
Isotype	IgG
Applications	WB
Reactivity	Human

Package
100 µl

Applications

Application Note

*Optimal dilutions/concentrations should be determined by the researcher.

Suggested dilution	Recommended dilution
WB	Assay dependent

Not tested in other applications.

Calculated MW 44 kDa. ([Note](#))

Properties

Form	Liquid
Buffer	PBS, 2% sucrose
Preservative	0.09% sodium azide
Storage	Store as concentrated solution. Centrifuge briefly prior to opening vial. For short-term storage (1-2 weeks), store at 4°C. For long-term storage, aliquot and store at -20°C or below. Avoid multiple freeze-thaw cycles.
Concentration	0.5 mg/ml (Please refer to the vial label for the specific concentration.)
Immunogen	The immunogen is a synthetic peptide directed towards the middle region of human CHI3L2 protein: KLA K LDLFINLLSFD F HGSWEKPLITGHNSPLSKGWQDRG P SSYYNVEYA
Purification	Purified by affinity chromatography
Conjugation	Unconjugated

Note

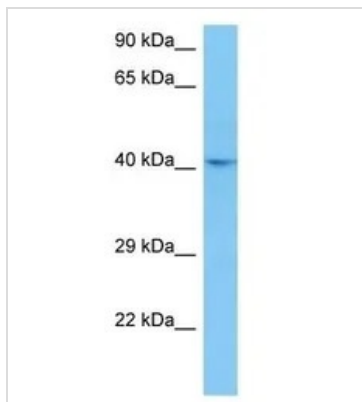
For laboratory research use only. Not for any clinical, therapeutic, or diagnostic use in humans or animals. Not for animal or human consumption.

Purchasers shall not, and agree not to enable third parties to, analyze, copy, reverse engineer or otherwise attempt to determine the structure or sequence of the product.



For full product information, images and publications, please visit our [website](#).

DATA IMAGES

**GTX04608 WB Image**

WB analysis of PC-3 whole cell lysate using GTX04608 YKL-39 antibody.

Dilution : 1 µg/mL



For full product information, images and publications, please visit our [website](#).